



**Newland AIDC**  
Scanning Made Simple

## **NLS-NVH220**

**Industrial Handheld Barcode Scanner**



**User  
Guide**

## **Disclaimer**

Please read through the manual carefully before using the product and operate it according to the manual. It is advised that you should keep this manual for future reference.

Do not disassemble the device or remove the seal label from the device, doing so will void the product warranty provided by Fujian Newland Auto-ID Tech. Co., Ltd.

All pictures in this manual are for reference only and actual product may differ. Regarding to the product modification and update, Fujian Newland Auto-ID Tech. Co., Ltd. reserves the right to make changes to any software or hardware to improve reliability, function, or design at any time without notice. The information contained herein is subject to change without prior notice.

The products depicted in this manual may include software copyrighted by Fujian Newland Auto-ID Tech. Co., Ltd or third party. The user, corporation or individual, shall not duplicate, in whole or in part, distribute, modify, decompile, disassemble, decode, reverse engineer, rent, transfer or sublicense such software without prior written consent from the copyright holders.

This manual is copyrighted. No part of this publication may be reproduced, distributed or used in any form without written permission from Newland.

Fujian Newland Auto-ID Tech. Co., Ltd. reserves the right to make final interpretation of the statement above.

## Revision History

Version	Description	Date
V1.0.0	Initial release.	June 25th, 2023
V1.0.1	Correct Barcode Programming	September 19th, 2023

# Table of Contents

<b>Revision History</b> .....	- 3 -
<b>Table of Contents</b> .....	- 4 -
<b>Preface</b> .....	<b>14</b>
Introduction .....	14
Chapter Description .....	14
Explanation of Icons .....	15
<b>Chapter 1 Getting Started</b> .....	<b>16</b>
Introduction .....	16
Features of the NVH220B .....	16
Accessories .....	16
Unpacking .....	17
CD220 Data Port .....	17
Connecting the NVH220B to a Host .....	18
Using USB Cable .....	19
Using RS-232 Cable .....	19
Power On, Power Off, Reboot .....	20
Maintenance .....	20
Scanning Instructions .....	21
<b>Chapter 2 NSet</b> .....	<b>22</b>
Introduction .....	22
Main Features .....	22
<b>Chapter 3 System Settings</b> .....	<b>23</b>
Introduction .....	23
Barcode Programming .....	23
Command Programming .....	23
NSet Programming .....	23
Programming Barcode/ Programming Command/Function .....	24
Use of Programming Command .....	24
Command Syntax .....	25
Query Commands .....	25
Responses .....	26
Examples .....	26
Use of Programming Barcode .....	27



Illumination .....	27
Illumination Color .....	28
Illumination Rotation Interval .....	29
Illumination Brightness .....	29
Aiming .....	30
Good Read Vibration .....	31
Good Read Vibration Duration .....	31
Good Read LED .....	32
Good Read LED Duration .....	32
Power On Beep .....	33
Good Read Beep .....	34
Good Read Beep Volume .....	34
Good Read Beep Duration .....	34
Good Read Beep Frequency .....	36
Number of Good Read Beeps .....	37
Good Read Beep Interval Time .....	37
Scan Mode .....	38
One Reading Timeout .....	39
Reading Interval .....	40
Image Stabilization Timeout (Sense Mode) .....	40
Image Stabilization Timeout (Sense Mode) .....	40
Delay .....	41
Reread Delay .....	41
Reread Delay Time .....	42
Reread Delay Time .....	42
Good Read Delay .....	42
Good Read Delay Time .....	43
Image Decoding Timeout .....	44
Scanning Preference .....	44
Sensitivity .....	46
Read Barcode On/Off .....	47
Decode Area .....	47
Image Flipping .....	51
Image Resize .....	51
Image Filter .....	52
Exposure Settings .....	52
Maximum Exposure Time .....	53
Minimum Exposure Tim .....	53

Set Maximum Gain Parameter .....	54
Set Minimum Gain Parameter .....	54
Transmit Not Good Read Message .....	55
Edit NGR Message .....	55
Default Settings .....	56
Factory Defaults .....	56
Custom Defaults .....	56
Query Scanner Information .....	58
Query Product Name .....	58
Query Firmware Version .....	59
Query Decoder Version .....	59
Query Hardware Version .....	59
Query Serial Number .....	60
Query Manufacturing Date .....	60
Query Cradle Information .....	60
Query Cradle Battery Level .....	60
Power off .....	61
<b>Chapter 4 Wireless Communications .....</b>	<b>62</b>
Wireless Factory Defaults .....	62
Operating Modes .....	63
Cradle Mode .....	63
Bluetooth HID mode .....	63
Batch Mode .....	64
Batch Mode Options .....	64
Start Batch Transmit .....	65
Query/Clear Stored Data in Flash .....	65
Prevent Same Barcode Storage .....	65
Batch Mode Transmit Delay .....	66
Batch Transmit Terminating Character .....	67
Custom Batch Transmit Terminating Character .....	68
Auto Clear Flash Memory .....	68
Radio Communication Modes .....	69
Sleep Timeout .....	69
Shutdown Timeout .....	70
When The Wireless Scanner Is Placed On The Cradle .....	70
<b>Chapter 5 RS-232 Interface .....</b>	<b>71</b>
Introduction .....	71

Baud Rate .....	71
Parity Check .....	73
Data Bit .....	74
Stop Bit .....	74
RS232 Hardware control .....	75
<b>Chapter 6 USB Interface .....</b>	<b>76</b>
Introduction .....	76
USB HID Keyboard .....	77
USB Country Keyboard Types .....	78
Beep on Unknown Character .....	82
Emulate ALT+Keypad .....	83
Code Page .....	84
Unicode Encoding .....	87
Function Key Mapping .....	87
ASCII Function Key Mapping Table .....	89
ASCII Function Key Mapping Table (Continued) .....	90
Inter-Keystroke Delay .....	91
Caps Lock .....	91
Convert Case .....	92
Emulate Numeric Keypad .....	92
Polling Rate .....	96
USB CDC .....	98
USB HID-POS .....	98
Introduction .....	98
Access the Scanner with Your Program .....	99
Acquire Scanned Data .....	99
Send Command to the Scanner .....	99
VID/PID .....	100
<b>Chapter 7 Symbologies .....</b>	<b>101</b>
Introduction .....	101
Global Settings .....	101
Enable/Disable All Symbologies .....	101
Enable/Disable 1D Symbologies .....	102
Enable/Disable 2D Symbologies .....	102
Image Brightness Adaptation .....	103
1D Decoding Complexity .....	103
1D Inverse .....	104

Read Multi-barcodes on an Image .....	104
Code 11 .....	106
Restore Factory Defaults .....	106
Enable/Disable Code 11 .....	106
Set Length Range for Code 11 .....	107
Check Character Verification .....	108
Transmit Check Character .....	110
Code 128 .....	111
Restore Factory Defaults .....	111
Enable/Disable Code 128 .....	111
Set Length Range for Code 128 .....	112
Code 39 .....	113
Restore Factory Defaults .....	113
Enable/Disable Code 39 .....	113
Set Length Range for Code 39 .....	114
Check Character Verification .....	115
Transmit Start/Stop Character .....	116
Enable/Disable Code 39 Full ASCII .....	116
GS1-128 (UCC/EAN-128) .....	117
Restore Factory Defaults .....	117
Enable/Disable GS1-128 .....	117
AIM 128 .....	118
Restore Factory Defaults .....	118
Enable/Disable AIM 128 .....	118
Set Length Range for AIM 128 .....	119
ISBT 128 .....	120
Restore Factory Defaults .....	120
Enable/Disable ISBT 128 .....	120
Codabar .....	121
Restore Factory Defaults .....	121
Enable/Disable Codabar .....	121
Set Length Range for Codabar .....	122
Check Character Verification .....	123
Start/Stop Character .....	125
Code 93 .....	127
Restore Factory Defaults .....	127
Enable/Disable Code 93 .....	127
Set Length Range for Code 93 .....	128

Check Character Verification .....	129
UPC-A .....	131
Restore Factory Defaults .....	131
Enable/Disable UPC-A .....	131
Transmit Check Character .....	131
2-Digit Add-On Code .....	132
5-Digit Add-On Code .....	134
Add-On Code Required .....	134
Add-On Code Separator .....	135
Transmit Preamble Character .....	135
UPC-E .....	136
Restore Factory Defaults .....	136
Enable/Disable UPC-E .....	136
Transmit Check Character .....	138
2-Digit Add-On Code .....	138
5-Digit Add-On Code .....	139
Add-On Code Required .....	141
Add-On Code Separator .....	141
Transmit Preamble Character .....	142
Convert UPC-E to UPC-A .....	142
EAN-8 .....	143
Restore Factory Defaults .....	143
Enable/Disable EAN-8 .....	143
Transmit Check Character .....	144
2-Digit Add-On Code .....	144
5-Digit Add-On Code .....	146
Add-On Code Required .....	146
Add-On Code Separator .....	147
Convert EAN-8 to EAN-13 .....	147
EAN-13 .....	149
Restore Factory Defaults .....	149
Enable/Disable EAN-13 .....	149
Transmit Check Character .....	150
2-Digit Add-On Code .....	150
5-Digit Add-On Code .....	152
Add-On Code Required .....	152
Add-On Code Separator .....	153
EAN-13 Beginning with 290 Add-On Code Required .....	153

EAN-13 Beginning with 378/379 Add-On Code Required .....	154
EAN-13 Beginning with 414/419 Add-On Code Required .....	155
EAN-13 Beginning with 434/439 Add-On Code Required .....	155
EAN-13 Beginning with 977 Add-On Code Required .....	156
EAN-13 Beginning with 978 Add-On Code Required .....	157
EAN-13 Beginning with 979 Add-On Code Required .....	157
ISBN .....	158
Restore Factory Defaults .....	158
Enable/Disable ISBN .....	158
Set ISBN Format .....	159
ISSN .....	160
Restore Factory Defaults .....	160
Enable/Disable ISSN .....	160
Interleaved 2 of 5 .....	161
Restore Factory Defaults .....	161
Enable/Disable Interleaved 2 of 5 .....	161
Set Length Range for Interleaved 2 of 5 .....	162
Check Character Verification .....	163
Matrix 2 of 5 .....	164
Restore Factory Defaults .....	164
Enable/Disable Matrix 2 of 5 .....	164
Set Length Range for Matrix 2 of 5 .....	165
Check Character Verification .....	166
Industrial 25 .....	168
Restore Factory Defaults .....	168
Enable/Disable Industrial 25 .....	168
Set Length Range for Industrial 25 .....	169
Check Character Verification .....	170
ITF-14 .....	172
Restore Factory Defaults .....	172
Enable/Disable ITF-14 .....	172
ITF-6 .....	174
Restore Factory Defaults .....	174
Enable/Disable ITF-6 .....	174
Standard 25 .....	176
Restore Factory Defaults .....	176
Enable/Disable Standard 25 .....	176
Set Length Range for Standard 25 .....	177

Check Character Verification .....	178
COOP 25 .....	180
Restore Factory Defaults .....	180
Enable/Disable COOP 25 .....	180
Set Length Range for COOP 25 .....	181
Check Character Verification .....	182
Deutsche 14 .....	183
Restore Factory Defaults .....	183
Enable/Disable Deutsche 14 .....	183
Deutsche 12 .....	184
Restore Factory Defaults .....	184
Enable/Disable Deutsche 12 .....	184
Plessey .....	185
Restore Factory Defaults .....	185
Enable/Disable Plessey .....	185
Set Length Range for Plessey .....	186
Check Character Verification .....	187
MSI-Plessey .....	188
Restore Factory Defaults .....	188
Enable/Disable MSI-Plessey .....	188
Set Length Range for MSI-Plessey .....	189
Check Character Verification .....	190
Transmit Check Character .....	191
QR Code .....	192
Restore Factory Defaults .....	192
Enable/Disable QR Code .....	192
Set Length Range for QR Code .....	193
QR Inverse .....	194
Character Encoding .....	194
QR ECI Output .....	195
Continuous Code .....	195
Dot-peen Code .....	195
Mirror Code .....	196
QR Model 1 .....	196
QR Model 2 .....	197
Micro QR .....	197
Data Matrix .....	198
Restore Factory Defaults .....	198

Enable/Disable Data Matrix .....	198
Set Length Range for Data Matrix .....	199
Rectangular Barcode .....	200
Data Matrix Inverse .....	200
Character Encoding .....	202
Data Matrix ECI Output .....	202
ECC200 .....	203
ECC0TO140 .....	203
Continuous Code .....	204
Dot-peen Code .....	204
Mirror Code .....	205
PDF417 .....	206
Restore Factory Defaults .....	206
Enable/Disable PDF417 .....	206
Set Length Range for PDF417 .....	208
PDF417 Inverse .....	209
Character Encoding .....	209
<b>Chapter 8 Prefix &amp; Suffix .....</b>	<b>211</b>
Introduction .....	211
Global Settings .....	212
Enable/Disable All Prefixes/Suffixes .....	212
Prefix Sequence .....	212
Custom Prefix .....	214
Enable/Disable Custom Prefix .....	214
Set Custom Prefix .....	214
AIM ID Prefix .....	215
Code ID Prefix .....	216
Restore All Default Code IDs .....	216
Modify Code ID .....	217
Custom Suffix .....	224
Enable/Disable Custom Suffix .....	224
Set Custom Suffix .....	224
Terminating Character Suffix .....	225
Enable/Disable Terminating Character Suffix .....	225
Set Terminating Character Suffix .....	225
<b>Chapter 9 Batch Programming .....</b>	<b>227</b>
Introduction .....	227



Create a Batch Command .....	228
Create a Batch Barcode .....	229
Use Batch Barcode .....	230

**Appendix .....** **231**

Digit Barcodes .....	231
Save/Cancel Barcodes .....	234
Factory Defaults Table .....	235
AIM ID Table .....	242
Code ID Table .....	243
Symbology ID Number .....	244
ASCII Table .....	245

# Preface

## Introduction

This manual provides detailed instructions for setting up and using the NLS-NVH220B Industrial Handheld Barcode Scanner (hereinafter referred to as **“the NVH220B”** or **“the scanner”**).

## Chapter Description

<i>Chapter 1 Getting Started</i>	: Gives a general description of NVH220B scanner and <i>list the parameters</i> .
<i>Chapter 2 NSet</i>	: Introduces a useful tool you can use to set up NVH220B scanner and develop new applications.
<i>Chapter 3 System Settings</i>	: Introduces three configuration methods and describes how to configure general parameters of NVH220B scanner.
<i>Chapter 4 Wireless Settings</i>	: Describes how to configure wireless settings.
<i>Chapter 5 RS-232 Interface</i>	: Describes how to configure RS-232 communication parameters.
<i>Chapter 6 USB Interface</i>	: Describes how to configure USB communication parameters.
<i>Chapter 8 Symbologies</i>	: List all compatible symbologies and describes how to configure the relevant parameters.
<i>Chapter 10 Prefix &amp; Suffix</i>	: Describe how to use prefix and suffix to customize scanned data.
<i>Chapter 11 Batch Programming</i>	: Explain how to integrate a complex programming task into a single barcode.
<i>Appendix</i>	: Provide factory defaults table and a bunch of frequently used programming barcodes.

---

## Explanation of Icons



Tools

This icon indicates something relevant to this manual.



This icon indicates this information requires extra attention from the reader.



This icon indicates handy tips that can help you use or configure the scanner with ease.



This icon indicates practical examples that can help you to acquaint yourself with operations.

---

# Chapter 1 Getting Started

## Introduction

The NVH220B reads a 1D or 2D barcode by capturing its image. Adopting the advanced **UIMG**<sup>®</sup> technology independently developed by Newland Auto-ID Tech, it provides several scan modes, including Manual mode, Pulse mode, Aim mode, Continuous mode and Batch mode, tailored to different scanning needs.

An illustrated introduction to the NVH220B is included in this chapter. If you have a scanner at hand, make good use of it to develop a better understanding of this manual. This chapter is written for normal users, maintenance staff and software developers.

## Features of the NVH220B

- Based on bluetooth 5.0 Technology
- Excellent DPM Decoding Capability
- Advanced Illumination system
- Fast Intelligent Learning and Rich Scene Configuration
- High Protection Industrial Structure Design

## Accessories

Name	Specification	Number
NLS- NVH220B Scanner	NLS- NVH220B	1
USB or RS232 or PS/2 Cable	RJ45 to USB or RS232 or PS/2	1
Power Adapter	Output: DC 5V,3A	1
Quick Guide	Paper	1
Qualification Certificate /Warranty Card	Paper	1

---

---

## Unpacking

Open the package and take out the scanner and its accessories. Check to make sure everything on the packing list is present and intact. If any contents are damaged or missing, please keep the original package and contact your dealer immediately for after-sales service.

## CD220 Data Port



CD220 Data Port Pinouts:

PIN	Signal	Type	Function
1	NC	-	Not connected
2	NC	-	Not connected
3	VCC	P	Power, +5V
4	TXD	O	RS-232 Output
5	RXD	I	Flow control signal
6	CTS	I	
7	RTS	O	Request To Send
8	GND	P	Ground
9	D-	I/O	USB Signal
10	D+	I/O	

CD300E Data Port Pinouts:

PIN	Signal	Type	Function
1	RXP	I	Ethernet RX signal

---

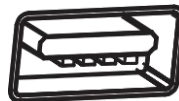
2	RXN	I	
3	VCC	P	Power, +5V
4	TXD	O	RS-232 Output
5	RXD	I	RS-232 input
6	TXP	O	Ethernet TX Signal
7	TXN	O	
8	GND	P	Ground
9	D-	I/O	USB Signal
10	D+	I/O	

## Connecting the NVH220B to a Host

The scanner must be connected to a host device in actual application, such as PC, POS or any intelligent terminal with USB 、RS-232、 using a communication cable (USB or RS-232 cable).

### USB

USB port on the host device



### RS-232

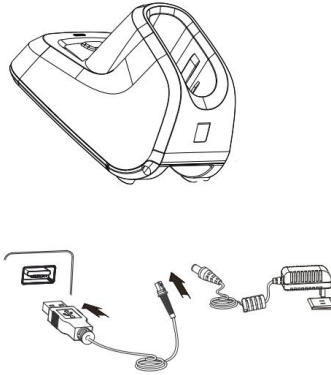
RS-232 port on the host device



**Note:** Please check which ports are available on your host to order the appropriate data cable.

---

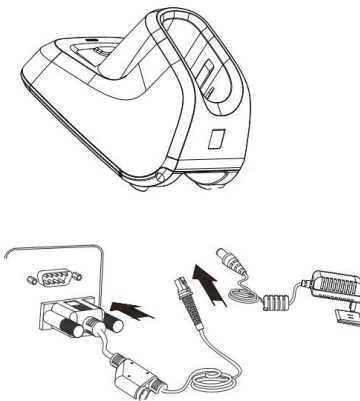
## Using USB Cable



Connect the scanner to a host device through a USB cable with RJ45 and USB connectors:

1. Plug the RJ45 connector into the data port on the scanner.
2. Plug the USB connector into the USB port on the host device.
3. Plug the supplied power adapter into the power jack on the cradle.

## Using RS-232 Cable



Connect the scanner to a host device through a RS-232 cable with RJ45 and RS-232 connectors and a power jack:

1. Plug the RJ45 connector into the data port on the scanner.
-

- 
2. Plug the RS-232 connector into the RS-232 port on the host device.
  3. Plug the supplied power adapter into the CD300 cradle.

## Power On, Power Off, Reboot

### Power on the scanner

A long press the trigger button, then the scanner will be turned on.

### Power off the scanner

Method 1: When in the Level scan mode, the scanner will automatically power off after being in sleep mode for 15 minutes.

Method 2: Scan the Power Off Scanner barcode in Chapter 3.

### Reboot the scanner

If the scanner stops responding to input or runs abnormally, press and hold the Reset button on the bottom of the scanner with a straightened paperclip to reboot it.

## Maintenance

- ✧ The scan window should be kept clean.
- ✧ Do not scratch the scan window.
- ✧ Use soft brush to remove the stain from the scan window.
- ✧ Use the soft cloth to clean the window, such as eyeglass cleaning cloth.
- ✧ Do not spray any liquid on the scan window.
- ✧ Do not use any detergent to clean other parts of the scanner except for water.



The warranty **DOES NOT** cover damages caused by inappropriate care and maintenance.



---

## Scanning Instructions

When the scanner is in the Level scan mode, you can follow the steps below to scan a barcode:

1. Press and hold the trigger. Then the scanner will project a red cross focusing dashed line .
2. Release the trigger when the aiming pattern goes off. If the barcode is decoded successfully, the scanner will emit a good read beep and the decoded data will be sent to the host device.

**Note:** For barcodes of the same batch, the scanner keeps a high success ratio in certain distance which is regarded as the optimal scanning distance.

---

# Chapter 2 NSet

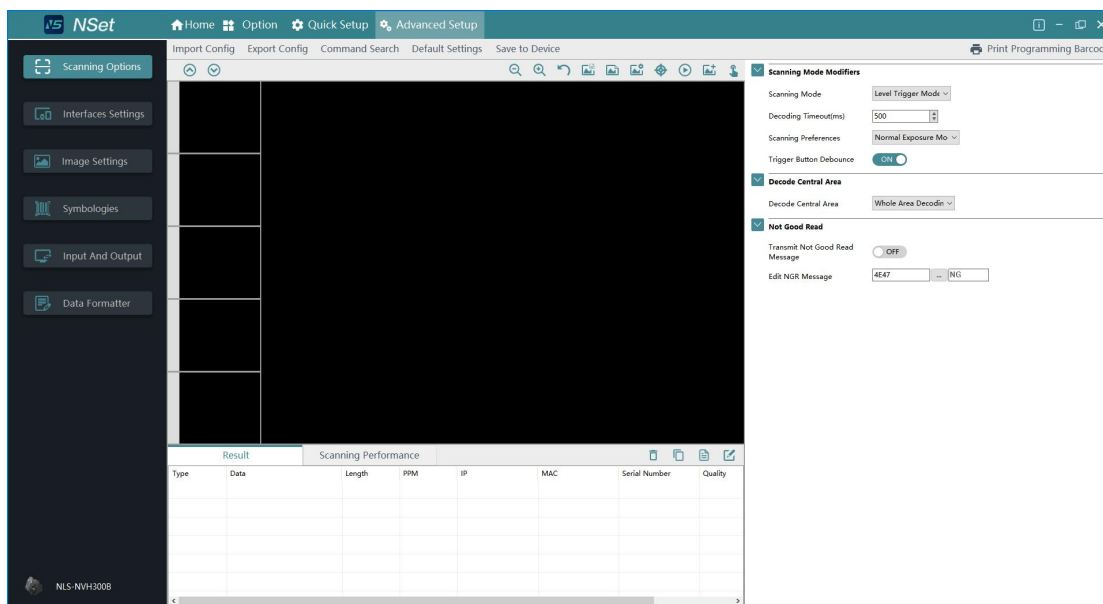
## Introduction

NSet Setup Tool is a User Interface client application developed by Fujian Newland Auto-ID Tech. Co., Ltd. That simplifies initial reader setup and changing parameters of the scanners you use.

The NSet is a common platform across all models. It is installed in and runs on Windows-based PCs (usually laptops), and connection takes place through several different interface.

## Main Features

- View and modify the information and setting parameters of online scanner.
- View the general configurations of the offline devices.
- Upgrade the firmware, compare the configurations, restore to the factory default ,etc in batch.
- Create/print/save setting barcodes to a PDF or Word file.
- Support to see how different options affect the reader in real time.
- Real-time refresh of device status.
- Support image playback.



# Chapter 3 System Settings

## Introduction

There are three ways to configure the NVH220B: Barcode programming, command programming and Nset programming.

### Barcode Programming

The NVH220B can be configured by scanning programming barcodes. All user programmable features/options are described along with their programming barcodes/commands in the following sections.

### Command Programming

The NVH220B can also be configured by serial commands (HEX) sent from the host device.

Users can design an application program to send those command strings to the scanners to perform device configuration.

### NSet Programming

Besides the two methods mentioned above, you can conveniently perform scanner configuration through NSet too. NSet is a Windows-based configuration tool particularly designed for Newland products, enabling users to gain access to decoded data and captured images and to configure scanners. For more information about this tool, refer to the *NSet User Guide*.



Before programming the scanner, you need to pair it to a cradle first. When programming the scanner with serial commands or NSet, you need to insert it in the paired cradle.

---

## Programming Barcode/ Programming Command/Function



The figure above is an example that shows you the programming barcode and command for the Level Mode function:

1. The **Level Mode** barcode.
2. The **Level Mode** command.
3. The description of feature/option.
4. \*\* indicates factory default settings.

Note: "@" included in the programming command indicates permanent setting which means the setting will not be lost by removing power from the scanner or turning off or rebooting it; whereas "#" included in the programming command indicates temporary setting which means the setting will be lost by removing power from the scanner or turning off or rebooting it.

## Use of Programming Command

Besides the barcode programming method, the scanner can also be configured by serial commands (HEX) sent from the host device. **All commands must be entered in uppercase letters.**

---

## Command Syntax

*Prefix StorageType Tag SubTag {Data} [,SubTag {Data}] [;Tag SubTag {Data}] [...] Suffix*

**Prefix:** "~<SOH>0000" (HEX: **7E 01 30 30 30 30**), 6 characters.

**Storage Type:** "@" (HEX: **40**) or "#" (HEX: **23**), 1 character. "@" means permanent setting which will not be lost by removing power from the scanner or rebooting it; "#" means temporary setting which will be lost by removing power from the scanner or rebooting it.

**Tag:** A 3-character case-sensitive field that identifies the desired command group. For example, all USB HID-KBW configuration settings are identified with a Tag of KBW.

**SubTag:** A 3-character case-sensitive field that identifies the desired parameter within the tag group. For example, the SubTag for the keyboard layout is CTY.

**Data:** The value for a feature or parameter setting, identified by the Tag and SubTag.

**Suffix:** "<ETX>" (HEX: **3B 03**), 2 characters.

Multiple commands can be issued within one Prefix/Suffix sequence. For configuration commands, only the **Tag**, **SubTag**, and **Data** fields must be repeated for each command in sequence. If an additional command is to be applied to the same Tag, then the command is separated with a comma (,) and only the **SubTag** and **Data** fields of the additional commands are issued. If the additional command requires a different **Tag** field, the command is separated from previous command by a semicolon (;).

## Query Commands

For query commands, the entry in the **Data** field in the syntax above is one of the following characters means:

- \* (HEX: **2A**)      What is the scanner's current value for the setting(s).
- & (HEX: **26**)      What is the factory default value for the setting(s).
- ^ (HEX: **5E**)      What is the range of possible values for the setting(s).

The value of the **StoreType** field in a query command can be either "@" (HEX: **40**) or "#" (HEX: **23**).

A query command with the **SubTag** field omitted means to query all the settings concerning a tag. For example, to query all the current settings about Code 11, you should enter **7E 01 30 30 30 30 40 43 31 31 2A 3B 03** (i.e. ~<SOH>0000@C11\*;<ETX>).

---

## Responses

Different from command sequence, the prefix of a response consists of the six characters of “<STX><SOH>0000” (HEX: **02 01 30 30 30 30**).

The scanner responds to serial commands with one of the following three responses:

- <ACK> (HEX: **06**) Indicates a good command which has been processed.
- <NAK> (HEX: **15**) Indicates a good configuration command with its **Data** field entry out of the allowable range for this Tag and SubTag combination (e.g. an entry for an inter-keystroke delay of 100 when the field will only allow 2 digits), or an invalid query command.
- <ENQ> (HEX: **05**) Indicates an invalid Tag or SubTag command.

When responding, the scanner echoes back the command sequence with the status character above inserted directly before each of the punctuation marks (the comma or semicolon) in the command.

## Examples

### Example 1: Enable Code 11, set the minimum and maximum lengths to 12 and 22 respectively.

Enter: **7E 01 30 30 30 30 40 43 31 31 45 4E 41 31 2C 4D 49 4E 31 32 2C 4D 41 58 32 32 3B 03**  
(~<SOH>0000@C11ENA1,MINI2,MAX22;<ETX>)

Response: **02 01 30 30 30 30 40 43 31 31 45 4E 41 31 06 2C 4D 49 4E 31 32 06 2C 4D 41 58 32 32 06 3B 03**  
(<STX><SOH>0000@C11ENA1<ACK>,MINI2<ACK>,MAX22<ACK>;<ETX>)

### Example 2: Query the current minimum and maximum lengths of Code 11.

---

Enter: **7E 01 30 30 30 30 40 43 31 31 4D 49 4E 2A 2C 4D 41 58 2A 3B 03**  
(~<SOH>0000@C11MIN\*,MAX\*;<ETX>)

Response: **02 01 30 30 30 30 40 43 31 31 4D 49 4E 31 32 06 2C 4D 41 58 32 32 06 3B 03**  
(<STX><SOH>0000@C11MINI2<ACK>,MAX22<ACK>;<ETX>)

## Use of Programming Barcode

Programming barcode data (i.e. the characters under programming barcode) can be transmitted to the host device. Scan the appropriate barcode below to enable or disable the transmission of programming barcode data to the host device.



@SETUPT0

**\*\* Do Not Transmit Programming Barcode Data**



@SETUPT1

**Transmit Programming Barcode Data**

## Illumination



@ILLSCN1

**\*\* On**



@ILLSCN0

**Off**

## **Illumination Color**



@ILLCLR0

**Red LED**



@ILLCLR1

**White LED**



@ILLCLR2

**\*\* Red LED and White LED**





@ILLCLR5

**Red LED, white LED and blue LED**



@ILLCLR4

**Blue LED**



@ILLCLR6

**White LED and blue LED**



@ILLCLR7

**Red LED and blue LED**

## **Illumination Rotation Interval**

This parameter sets the Illumination Rotation Interval. The default value is 2000ms.



@ILLSCT

**Illumination Rotation Interval**

## **Illumination Brightness**

This parameter increases the maximum value of the exposure and the gain.



@ILLBRG0

**\*\* Normal**



@ILLBRG1

**High Brightness**

## Aiming

When scanning/capturing image, the scanner projects an aiming pattern which allows positioning the target barcode within its field of view and thus makes decoding easier.

**Normal:** The scanner projects an aiming pattern only during barcode scanning/capture.

**Always On:** Aiming pattern is constantly on after the scanner is powered on.

**Off:** Aiming pattern is off all the time.



@AMLENA1

**\*\* Normal**



@AMLENA0

**Off**



@AMLENA2

**Always On**

## Good Read Vibration

You may choose whether or not to let the scanner vibrate when a barcode is successfully read by scanning the appropriate barcode below.



@GRVENA0

**\*\* Off**



@GRVENA1

**On**

## Good Read Vibration Duration

This parameter sets the length for the Good Read Vibration. It is programmable in 1ms increments from 100ms to 2,000ms. The default value is 300ms.



@GRVDUR

**Set Good Read Vibration Duration**

---

---

## Example

### Set the Good Read Vibration duration to 800ms:

1. Scan the Set Good Read Vibration Duration barcode.
2. Scan the numeric barcodes "8", "0" and "0" from the "Digit Barcodes" section in Appendix.
3. Scan the Save barcode from the "Save/Cancel Barcodes" section in Appendix.

## Good Read LED

The green LED can be programmed to be On or Off to indicate good read.



@GRLENA1

**\*\* On**



@GRLENA0

**off**

## Good Read LED Duration

This parameter sets the amount of time the Good Read LED remains on following a good read. It is programmable in 10ms increments from 20ms to 10,000ms.



@GRLDUR20

**\*\* Short (20ms)**



@GRLDUR220

**Long (220ms)**



@GRLDUR120

**Medium (120ms)**



@GRLDUR320

**Prolonged (320ms)**



@GRLDUR

**Custom (20 - 10,000ms)**

**E**  
*xample*

**Set the Good Read LED duration to 800ms:**

1. Scan the **Custom** barcode.
2. Scan the numeric barcodes "8", "0" and "0" from the "Digit Barcodes" section in Appendix.
3. Scan the **Save** barcode from the "Save/Cancel Barcodes" section in Appendix.

## Power On Beep

The scanner can be programmed to beep when it is powered on. Scan the **Off** barcode if you do not want a power on beep.



@PWBENA1

\*\* On



@PWBENA0

Off

## Good Read Beep

Scanning the **Off** barcode can turn off the beep that indicates successful decode; scanning the **On** barcode can turn it back on.



@GRBENA1

\*\* On



@GRBENA0

Off

## Good Read Beep Volume

Scanning the appropriate arcodes can set the Good Read Beep Volume to low ,medium and high. This parameter is programmable from 1 to 10.

## Good Read Beep Duration

---

This parameter sets the length of the beep the scanner emits on a good read. It is programmable in 10ms increments from 20ms to 300ms.



@GRBDUR40

**Short (40ms)**



@GRBDUR80

**\*\* Medium (80ms)**



@GRBDUR120

**Long (120ms)**



@GRBDUR

**Custom (20 - 300ms)**

**E**  
*xample*

**Set the Good Read Beep duration to 200ms:**

1. Scan the **Custom** barcode.
2. Scan the numeric barcodes "2", "0" and "0" from the "Digit Barcodes" section in Appendix.
3. Scan the **Save** barcode from the "Save/Cancel Barcodes" section in Appendix.

---

## Good Read Beep Frequency

This parameter is programmable in 1Hz increments from 20Hz to 20,000Hz.



@GRBFRQ800

**Extra Low (800Hz)**



@GRBFRQ1600

**Low (1600Hz)**



@GRBFRQ2730

**\*\* Medium (2730Hz)**



@GRBFRQ4200

**High (4200Hz)**



@GRBFRQ

**Custom (20 - 20,000Hz)**

**E**  
*xample*

**Set the Good Read Beep frequency to 2,000Hz:**

1. Scan the **Custom** barcode.
2. Scan the numeric barcodes "2", "0", "0" and "0" from the "Digit Barcodes" section in Appendix.
3. Scan the **Save** barcode from the "Save/Cancel Barcodes" section in Appendix.



---

## Number of Good Read Beeps

The number of beeps of a good read can be programmed from 1 to 9. To change the number of beeps, scan the barcode below and then scan a numeric barcode (1-9) and the **Save** barcode. The default value is 1.



@GRBNUM

**Number of Good Read Beeps**

## Good Read Beep Interval Time

Good Read Beep Interval Time modifies the interval time between beeps, and it becomes effective when the Number of Good Read Beeps is greater than one.



@GRBITV0

**\*\* Short**



@GRBITV1

**Medium**

---

## Scan Mode

**Level Mode:** A trigger pull activates a decode session. The decode session continues until a barcode is decoded or the trigger is released.

**Sense Mode:** The scanner activates a decode session every time when it detects a change in ambient illumination. The decode session continues until the barcode is decoded or the decode session timeout expires. Pressing the trigger can also activate a decode session.

**Continuous Mode:** The scanner automatically starts one decode session after another. To suspend/resume barcode reading, simply press the trigger. **Reread Timeout** can avoid undesired rereading of same barcode in a given period of time.

**Pulse Mode:** When the trigger is pulled and released, scanning is activated until a barcode is decoded or the decode session timeout expires (The decode session timeout begins when the trigger is released).

**Batch Mode:** A trigger pull activates a round of multiple decode sessions. This round of multiple scans continues until the trigger is released. Rereading the same barcode is not allowed in the same round.

**Pre-Aiming Mode:**When the user holds the scanner , the scanner lights up the aiming light to indicate the current position of the scanner before the user presses the button. After pressing the button, the scanner starts to read the bar code( the aimer is turned on or off according to the configuration of aimer mode. When the button is released or the barcode is decoded successfully, the code is stopped. When the user drops down the scanner for 3 seconds, the aiming lamp will turn off.



@SCNMOD0

**Level Mode**



@SCNMOD2

**Sense Mode**



@SCNMOD3

### Continuous Mode



@SCNMOD4

### Pulse Mode



@SCNMOD7

### Batch Mode

## One Reading Timeout

This parameter sets the maximum time decode session continues during a scan attempt. It is programmable in 1ms increments from 1ms to 3,600,000ms. When it is set to 0, the timeout is infinite. The default setting is 3,000ms.



@ORTSET

### One Reading Timeout

**E**  
*xample*

#### Set the decode session timeout to 1,500ms:

1. Scan the Decode Session Timeout barcode.
2. Scan the numeric barcodes "1", "5", "0" and "0" from the "Digit Barcodes" section in Appendix.
3. Scan the Save barcode from the "Save/Cancel Barcodes" section in Appendix.

---

## Reading Interval

Timeout between Decodes sets the time period between the end of one decode session and the start of next session. It is programmable in 1ms increments from 1ms to 10,000ms. The default timeout is 500ms. This feature is only applicable to the Continuous modes.



@SCNINV

**Timeout between Decodes**

**E**  
*xample*

### **Set the timeout between decodes to 800ms:**

1. Scan the **Timeout between Decodes** barcode.
2. Scan the numeric barcodes "8", "0" and "0" from the "Digit Barcodes" section in Appendix.
3. Scan the **Save** barcode from the "Save/Cancel Barcodes" section in Appendix.

## Image Stabilization Timeout (Sense Mode)

In the course of the sense mode, when the scanner stop reading, it will enter a new process of read-adaptation to the reading environment (image).After the Image Stabilization Timeout will the scanner enter the sense mode and wait for the barcode to present.Set the parameters of Image Stabilization Timeout could change the time to adapt the reading environment. It is programmable in 1ms increments from 1ms to 3,000ms. The default setting is 200ms.



@SENIST

**Image Stabilization Timeout (Sense Mode)**

---

## Delay

### Reread Delay

Reread delay can avoid undesired rereading of same barcode in a given period of time. This feature is only applicable to the Sense and Continuous modes.

**Enable Reread Delay:** Do not allow the scanner to re-read same barcode before the timeout between decodes (same barcode) expires.

**Disable Reread Delay:** Allow the scanner to re-read same barcode



@RRDENA1

**\*\*On**



@RRDENA0

**Off**

---

## Reread Delay Time

The following parameter sets the timeout between decodes for same barcode. It is programmable in 1ms increments from 1ms to 3,600,000ms. The default setting is 15,000ms.



@RRDDUR

### Reread Delay Time

**E**  
*example*

#### Set the Reread Delay Time to 1,000ms:

1. Scan the **Reread Delay Time** barcode.
2. Scan the numeric barcodes "1", "0", "0" and "0" from the "Digit Barcodes" section in Appendix.
3. Scan the Save barcode from the "Save/Cancel Barcodes" section in Appendix.

## Good Read Delay

Good Read Delay sets the minimum amount of time before the scanner can read another barcode. This parameter is programmable in 1ms increments from 1ms to 3,600,000ms. The default setting is 500ms. Scan the appropriate barcode below to enable or disable the delay.



@GRDENAI

### **Enable Good Read Delay**



@GRDENA0

### **\*\* Disable Good Read Delay**

## **Good Read Delay Time**

To set the good read delay, scan the barcode below, then set the delay (from 1 to 3,600,000ms) by scanning the digit barcode(s) then scanning the **Save** barcode from the Appendix.



@GRDDUR

### **Good Read Delay Time**

**E**  
*example*

#### **Set the Good Read Delay Time to 1,000ms:**

1. Scan the Good Read Delay Time barcode.
2. Scan the numeric barcodes "1", "0", "0" and "0" from the "Digit Barcodes" section in Appendix.
3. Scan the Save barcode from the "Save/Cancel Barcodes" section in Appendix.

---

---

## Image Decoding Timeout

Image Decoding Timeout specifies the maximum time the scanner will spend decoding an image. This parameter is programmable in 1ms increments from 1ms to 3,000ms. The default timeout is 350ms.



@DETSET

**Image Decoding Timeout**

**E**  
*sample*

### **Set the image decoding timeout to 800ms:**

1. Scan the **Image Decoding Timeout** barcode.
2. Scan the numeric barcodes "8", "0" and "0" from the "Digit Barcodes" section in Appendix.
3. Scan the **Save** barcode from the "Save/Cancel Barcodes" section in Appendix.

## Scanning Preference

**Normal Mode:** Select this mode when reading barcodes on paper.

**High Motion Tolerance Mode:** Select this mode when reading barcodes on moving objects.





@EXPLVL0

**\*\* Normal Mode**



@EXPLVL4

**High Motion Tolerance Mode**

---

## Sensitivity

Sensitivity specifies the degree of acuteness of the scanner's response to changes in images captured. There are 20 levels to choose from. The smaller the value, the higher the sensitivity and the lower requirement in image change to trigger the scanner. You can select an appropriate degree of sensitivity that fits the application environment. The default setting is Level 1. This feature is only applicable to the Sense mode.



@SENLVL14

**Low Sensitivity**



@SENLVL11

**Medium Sensitivity**



@SENLVL8

**High Sensitivity**



@SENLVL5

**Enhanced  
Sensitivity**



@SENLVL

### Custom Sensitivity

**E**  
*xample*

#### Set the Sensitivity to 10:

1. Scan the **Custom Sensitivity** barcode.
2. Scan the numeric barcodes "1", "0" from the "Digit Barcodes" section in Appendix.
3. Scan the **Save** barcode from the "Save/Cancel Barcodes" section in Appendix.

## Read Barcode On/Off

Sending the Read Barcode Off command **@NGRENA0** to the scanner can disable it from reading barcode, and the scanner is unable to scan barcode unless you send the Read Barcode On command **@NGRENA1** to it or power cycle it. By default, Read Barcode is On.

## Decode Area

**Whole Area Decoding:** The scanner attempts to decode barcode(s) within its field of view, from the center to the periphery, and transmits the barcode that has been first decoded.

**Specific Area Decoding:** The scanner attempts to read barcode(s) within a specified decoding area and transmits the barcode that has been first decoded. This option allows the scanner to narrow its field of view to make sure it reads only those barcodes intended by the user. For instance, if multiple barcodes are placed closely together, specific area decoding in conjunction with appropriate pre-defined decoding area will insure that only the desired barcode is read.

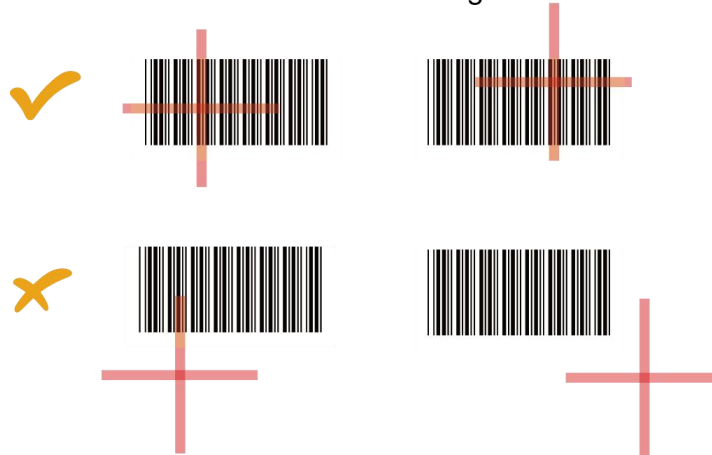
**Acuscan:** The scanner only decodes the barcode aimed squarely by the aiming pattern. For those using a crosshair aiming pattern, only the barcode aimed by the center of crosshair will be decoded.

**Priori On Aimed Barcode:** The scanner attempts to decode priority the aimed barcode(s). If there is no barcode in the aimed area, the scanner would decode the barcode close to the aiming area first.

---

---

Acuread Decoding



@CADENA0

**Whole Area Decoding**



@CADENA1

**Specific Area Decoding**



@CADENA2

**Acuscan**



@CADENA4

**\*\*Priori On Aimed Barcode**

---

If **Specific Area Decoding** is enabled, the scanner only reads barcodes that intersect the predefined decoding area.

The default decoding area is an area of 40% top, 60% bottom, 40% left and 60% right of the scanner's field of view

You can define the decoding area using the **Top of Decoding Area**, **Bottom of Decoding Area**, **Left of Decoding Area** and **Right of Decoding Area** barcodes as well as numeric barcode(s) that represent(s) a desired percentage (0-100). The value of Bottom must be greater than that of Top; the value of Right must be greater than that of Left.



@CADTOP

**Top of Decoding Area**



@CDBOT

**Bottom of Decoding Area**



@CADLEF

**Left of Decoding Area**



@CADRIG

**Right of Decoding Area**



## **E** *example*

**Program the scanner to only read Barcode 1 in the figure above by setting the decoding area to 10% top, 45% bottom, 15% left and 30% right:**

1. Scan the **Top of Decoding Area** barcode.
2. Scan the numeric barcode "0" from the "Digit Barcodes" section in Appendix.
3. Scan the **Save** barcode from the "Save/Cancel Barcodes" section in Appendix.
4. Scan the **Bottom of Decoding Area** barcode.
5. Scan the numeric barcodes "4" and "5" from the "Digit Barcodes" section in Appendix.
6. Scan the **Save** barcode from the "Save/Cancel Barcodes" section in Appendix.
7. Scan the **Top of Decoding Area** barcode.
8. Scan the numeric barcodes "1" and "0" from the "Digit Barcodes" section in Appendix.
9. Scan the **Save** barcode from the "Save/Cancel Barcodes" section in Appendix.
10. Scan the **Left of Decoding Area** barcode.
11. Scan the numeric barcode "0" from the "Digit Barcodes" section in Appendix.
12. Scan the **Save** barcode from the "Save/Cancel Barcodes" section in Appendix.
13. Scan the **Right of Decoding Area** barcode.
14. Scan the numeric barcodes "3" and "0" from the "Digit Barcodes" section in Appendix.
15. Scan the **Save** barcode from the "Save/Cancel Barcodes" section in Appendix.
16. Scan the **Left of Decoding Area** barcode.
17. Scan the numeric barcodes "1" and "5" from the "Digit Barcodes" section in Appendix.
18. Scan the **Save** barcode from the "Save/Cancel Barcodes" section in Appendix.

---

## Image Flipping



@MIRRORO

**\*\* Do Not Flip**



@MIRROR1

**Flip Horizontally**

Example of image not flipped



Example of image flipped horizontally



## Image Resize

This option alters image resolution before compression. Multiple pixels are combined to one pixel, resulting in a

smaller image containing the original content with reduced resolution.



@IMGRSE0;

**\*\* Original Image**



@IMGRSE1;

**Resize By 50% On Both Horizontal And  
Vertical**

## Image Filter

Sets the filter to be applied to the image before being processed. This parameter can be used to successfully decode particular ink-spread printed codes (ex. direct part mark codes). Different filters can be applied to a single code. See the Nset User's Manual for examples of Image Filter application.

## Exposure Settings

This function determines whether the exposure parameter used by the scanner to take a picture is limited by the maximum exposure time and the minimum exposure time

- ◇ Off: The exposure time range of the photograph is controlled by the scanner firmware,
- ◇ On: The exposure time range of the photograph is between the maximum and minimum exposure time.



@EXPEEN0

**\*\* Off**





@EXPEENT

**On**

## **Maximum Exposure Time**



@EXPEMX

**Maximum Exposure Time**

## **Minimum Exposure Time**



@EXPEMN

**Minimum Exposure Time**

---

## Gain Parameter Limit

This function determines whether the gain parameters used by the scanner to take the picture are limited by the maximum and minimum gain.

- ✧ Off: Gain parameter is controlled by the scanner firmware.
- ✧ On: Gain parameter range of the photograph is between the maximum and minimum exposure time.



@EXPGEN0

**\*\* Off**



@EXPGEN1

**On**

## Set Maximum Gain Parameter



@EXPGMX

**Maximum Gain Parameter**

## Set Minimum Gain Parameter



@EXPGMN

### Maximum Gain Parameter

## Transmit Not Good Read Message

- ✧ Enable: When the code failed to decoded, and you release the trigger or Decode Session Timeout , Not Good Read Message will be sent to the host.
- ✧ Disable: When the code failed to decoded, Not Good Read Message will not be sent to the host.



@NGRENA0

\*\* Disable



@NGRENA1

Enable

## Edit NGR Message

Not Good Read Message supports up to 7 characters, from 0 to oxff. (Default: NG)



@NGRSET

Edit NGR Message

---

## Default Settings

### Factory Defaults

Scanning the following barcode can restore the scanner to the factory defaults.

You may need to reset all parameters to the factory defaults when:

- ✧ scanner is not properly configured so that it fails to decode barcodes.
- ✧ you forget previous configuration and want to avoid its impact.



@FACDEF

**Restore All Factory Defaults**

### Custom Defaults

Scanning the **Restore All Custom Defaults** barcode can reset all parameters on the scanner to the custom defaults. Scanning the **Save as Custom Defaults** barcode can set the current settings as custom defaults.

Custom defaults are stored in the non-volatile memory.



@CUSSAV

**Save as Custom Defaults**



@CUSDEF

### **Restore All Custom Defaults**



Restoring the scanner to the factory defaults will not remove the custom defaults from the

---

## Restore the Factory Defaults of Ethernet

Scanning the Restore the Factory Defaults of Ethernet can reset all parameters on the Ethernet parameters to the defaults(The default ip address is 192.168.1.100).



@NETDEF

**Restore the Factory Defaults of Ethernet**

## Query Scanner Information

After scanning the barcode below, the scanner information (including product name, firmware version, decoder version, hardware version, product serial number, OEM serial number and manufacturing date) will be sent to the host device.



@QRYSYS

**Query Scanner Information**

## Query Product Name



@QRYPDN

**Query Product Name**

---

**Query Firmware Version**



@QRYFWV

**Query Firmware Version**

**Query Decoder Version**



@QRYDCV

**Query Decoder Version**

**Query Hardware Version**



@QRYHWV

**Query Hardware Version**

---

---

## Query Serial Number



@QRYPSN

**Query Serial Number**

## Query Manufacturing Date



@QRYDAT

**Query Manufacturing Date**

## Query Cradle Information



@BASQSY

**Query Cradle Information**

## Query Cradle Battery Level





@WLSQPW

**Query Cradle Battery Level**

## **Power off**

The device would be powered off when the long period of time not in use or in the process of transportation,.



@PWROFF

**Power off**

---

---

## Chapter 4 Wireless Communications

### Wireless Factory Defaults

Scanning the following barcode can restore the cradle to the factory defaults.



@BASDFD

**Restore All Factory Defaults**

Scanning the following barcode can clear all cradle pairing information.



@BASCLP

**Undo Pairing Info on Cradle**

Scanning the following barcode can clear all scanner pairing information.



@WLSCLP

**Clear Pairing Info on Scanner**

---

## Operating Modes

The scanner provides the following two operating modes:

**Bluetooth HID Mode** allows your scanner to communicate with a remote host using Bluetooth. You must first pair your scanner to the host before these two Bluetooth devices can communicate with each other.

**Cradle Mode** allows your scanner to communicate with a remote host by pairing with a cradle.

### Cradle Mode



@INCBCI0

**Cradle Mode**

### Bluetooth HID mode



@INCBCI1

**Bluetooth HID Mode**



Scan the setup code @WLSCLP to clear the pairing information in wireless scanner, and re-scan the setup code @INCBCI0 to switch to cradle mode.

---

# Batch Mode

## Batch Mode Options

**Off:** The scanner attempts to transmit every barcode you scan. When you are out of service range, the scanned data will be lost.

**Automatic Batch Mode:** When in service range, the scanner attempts to transmit every barcode you scan. When out of range, the scanner stores the scanned data in the flash memory. Once you are back to service range, the scanner will automatically transmit the stored data and then remove it from the flash memory after transmission is done.

**Manual Batch Mode:** Scanned data will be stored in the flash memory no matter whether you are in service range or not. You may send the stored data to the host in either of the following ways: (i) press the P button on the cradle after inserting the scanner in cradle; or (ii) scan the Transmit Stored Data barcode before inserting the scanner in cradle. The scanner will automatically remove the stored data from the flash memory after transmission is done if the Auto Clear Stored Data after Transmission feature is turned on.



@WLSBATO

**\*\*off**



@WLSBATI

**Automatic Batch Mode**



@WLSBAT2

**Manual Batch Mode**

**Start Batch Transmit**



@WLSSBT

**Start Batch Transmit**

**Query/Clear Stored Data in Flash**



@WLSQFC

**Query the Number of Stored Barcodes**



@WLSCLF

**Clear All Stored Data**

**Prevent Same Barcode Storage**

This feature is available only when scanning barcodes in the Automatic or Manual Batch mode.

**On:** The scanner discards the data and generates an error beep when encountering a barcode that has

---

existed in the flash memory.

**Off:** The scanner stores the data when encountering a barcode that has existed in the flash memory.



@WLSSE0

\*\*OFF



@WLSSE1

ON

### **Batch Mode Transmit Delay**

Sometimes when multiple barcodes stored in the flash memory are sent to the host, the transmission of those barcodes is too fast for the application to process. To program a transmit delay between barcodes, scan one of the following delays.



@WLSBTD0

**No Transmit Delay**



@WLSBTD50

**Short Transmit Delay**



@WLSBTD100

### Medium Transmit Delay



@WLSBTD150

### Long Transmit Delay



@WLSBTD

### Custom Transmit Delay (0-10,000ms)

**E**  
*Example*

#### Set the batch mode transmit delay to 200ms:

1. Scan the **Enter Setup** barcode.
2. Scan the **Custom Transmit Delay** barcode.
3. Scan the numeric barcodes "2", "0" and "0" from the "Digit Barcodes" section in Appendix.
4. Scan the **Save** barcode from the "Save/Cancel Barcodes" section in Appendix.
5. Scan the **Exit Setup** barcode.

### Batch Transmit Terminating Character

You may scan the appropriate barcode below to select whether or not to send an end of transmission message (user-programmable) to notify the host when transmission of all stored data is done. This feature is only available to data transmission initiated manually under the Manual Batch mode.



@WLSBTT0

**\*\* Off**



@WLSBTT1

**On**

### Custom Batch Transmit Terminating Character



@WLSBTC

**Auto Clear**

**Set Batch Transmit Terminating Character**

**Flash Memory**

You may scan the appropriate barcode below to choose whether to clear or keep the stored data in the flash memory after transmission. This feature is only available to the Manual Batch mode.



@WLSCLE0

**\*\*OFF**



@WLSCLE1

**ON**



---

## Radio Communication Modes

**Point-to-Point Mode:** Only one scanner can be paired to one cradle at a time.

**Multiple-to-Point Mode:** Up to seven scanners can be paired to one cradle.



@BASMPM0

**\*\* Point-to-Point Mode**



@BASMPM1

**Multiplepoint-to-Point Mode**

## Sleep Timeout

When the wireless scanner is in standby state for a period of time (i.e., the wireless scanner sleep timeout), the device will go into the sleep mode timeout value ranges from 1-65535 in seconds, with the default value of 15 seconds.



@WLSIDT

**Sleep Timeout**

**E**  
*sample*

### Set the Sleep Timeout to 30s

1. Read **Wireless Scanner Sleep Timeout** barcode
2. Scan the numeric barcodes "3", "0" from the "Digit Barcodes" section in Appendix.
3. Scan the Save barcode from the "Save/Cancel Barcodes" section in Appendix.

---

## Shutdown Timeout

When the wireless scanner is in sleeping state for a period of time (i.e., the Wireless Scanner Shutdown Timeout), the device will shut down automatically. timeout value ranges from 1-255 in minute, with the default value of 30 minutes.



@W LSDST

### Wireless Scanner Shutdown Timeout

**E**  
*xample*

#### Set the Shutdown Timeout to 18mins

1. Read the Wireless Scanner Shutdown Timeout barcode
2. Scan the numeric barcodes "1", "8" from the "Digit Barcodes" section in Appendix.
3. Scan the Save barcode from the "Save/Cancel Barcodes" section in Appendix.

## When The Wireless Scanner Is Placed On The Cradle



@WLSRCE0

**\*\* Disable Reading Barcode**



@WLSRCE1

**Enable Reading Barcode**

# Chapter 5 RS-232 Interface

## Introduction

When the cradle is connected to the RS-232 port of a host device, you need to set communication parameters (including baud rate, parity check, data bit and stop bit) on the cradle to match the host device so that two devices can communicate with each other.



@INTERFO

**RS-232**

## Baud Rate

Baud rate is the number of bits of data transmitted per second. Set the baud rate to match the host requirements.



@232BAD8

**\*\* 115200**



@232BAD7

**57600**



@232BAD6

**38400**



@232BAD4

**14400**



@232BAD2

**4800**



@232BAD5

**19200**



@232BAD3

**9600**



@232BAD1

**2400**

## Parity Check

Set the parity type to match the host requirements.

**Odd Parity:** If the data contains an odd number of 1 bits, the parity bit value is set to 0.

**Even Parity:** If the data contains an even number of 1 bits, the parity bit value is set to 0.

**None:** Select this option when no parity bit is required.



@232PAR0

**\*\* None**



@232PAR1

**Even Parity**



@232PAR2

**Odd Parity**

---

---

## Data Bit

Set the number of data bits to match the host requirements.



@232DAT1

**7 Data Bits**



@232DAT0

**\*\* 8 Data Bits**

## Stop Bit

The stop bit(s) at the end of each transmitted character marks the end of transmission of one character and prepares the receiving device for the next character in the serial data stream. Set the number of stop bits to match the host requirements.



@232STP0

**\*\* 1 Stop Bit**



@232STP1

**2 Stop Bits**

---

## RS232 Hardware control

If this feature is enabled, the cradle determines whether to transmit data based on CTS signal level. When CTS signal is at a low level which means the serial port's cache memory of receiving device (such as PC) is full, the cradle sends data through RS-232 port until CTS signal is set to high level by receiving device. When the cradle is not ready for receiving, it will set RTS signal to low level. When sending device (such as PC) detects it, it will not send data to the cradle any more to prevent data loss.

If this feature is disabled, reception/transmission of serial data will not be influenced by RTS/CTS signal.



@232FLW0

**\*\* None**



@232FLW1

**RTS Hardware control**



@232FLW2

**CTS Hardware control**



@232FLW3

**RTS & CTS Hardware control**



Before enabling this feature, make sure that RTS/CTS signal lines are contained in RS-232 cable. Without the signal lines, RS-232 communication errors will occur.

---

## Chapter 6 USB Interface

### Introduction

There are three options for USB connection.

1. USB Keyboard: The scanner's transmission is simulated as USB keyboard input with no need for command configuration or a driver. Barcode data could be entered by the virtual keyboard directly and it is also convenient for the host device to receive data.
2. USB CDC: The USB CDC feature allows the host device to receive data in the way as a serial port does. A driver is needed when using this feature.
3. HID-POS: It is based on the HID interface, with no need for a custom driver. It excels virtual keyboard and traditional RS-232 interface in transmission speed.

When the scanner is connected to both USB and RS-232 ports on a host device, it will select the USB connection by default.



---

## USB HID Keyboard

When the cradle is connected to the USB port on a host device, you can enable the USB HID Keyboard feature by scanning the barcode below. The cradle's transmission will be simulated as USB keyboard input. The Host receives keystrokes on the virtual keyboard. It works on a Plug and Play basis and no driver is required.



@INTERF3

**\*\* USB HID Keyboard**



If the host device allows keyboard input, then no extra software is needed for HID Keyboard input.

---

## USB Country Keyboard Types

Keyboard layouts vary from country to country. The default setting is U.S. keyboard.



@KBWCTY0

**\*\* U.S. (English)**



@KBWCTY1

**Belgium**



@KBWCTY2

**Brazil**



@KBWCTY3

**Canada (French)**



@KBWCTY4

**Czechoslovakia**



@KBWCTY6

**Finland (Swedish)**



@KBWCTY8

**Germany/ Austria**



@KBWCTY10

**Hungary**



@KBWCTY5

**Denmark**



@KBWCTY7

**France**



@KBWCTY9

**Greece**



@KBWCTY11

**Israel (Hebrew)**



@KBWCTY12

**Italy**



@KBWCTY13

**Latin America/ South America**



@KBWCTY14

**Netherlands (Dutch)**



@KBWCTY15

**Norway**



@KBWCTY16

**Poland**



@KBWCTY17

**Portugal**



@KBWCTY18

**Romania**



@KBWCTY21

**Slovakia**



@KBWCTY23

**Sweden**



@KBWCTY25

**Turkey\_F**



@KBWCTY19

**Russia**



@KBWCTY22

**Spain**



@KBWCTY24

**Switzerland (German)**



@KBWCTY26

**Turkey\_Q**



@KBWCTY27

**UK**



@KBWCTY28

**Japan**

### Beep on Unknown Character

Due to the differences in keyboard layouts, some characters contained in barcode data may be unavailable on the selected keyboard. As a result, the scanner fails to transmit the unknown characters.

Scan the appropriate barcode below to enable or disable the emission of beep when an unknown character is detected.



@KBWBUC0

**\*\* Do Not Beep on Unknown Character**



@KBWBUC1

**Beep on Unknown Character**

**E**  
*example*

Supposing French keyboard (Country Code: 7) is selected and barcode data "ADF" is being dealt with, the keyboard will fail to locate the "Ð" (0xD0) character and the scanner will ignore the character and continue to process the next one.

**Do Not Beep on Unknown Character:** The scanner does not beep and the Host receives "AF".

---

**Beep on Unknown Character:** The scanner beeps and the Host still receives "AF".



If **Emulate ALT+Keypad ON** is selected, **Beep on Unknown Character** does not function.

## Emulate ALT+Keypad

When **Emulate ALT+Keypad** is turned on, any ASCII character (0x00 - 0xFF) is sent over the numeric keypad no matter which keyboard type is selected.

1. ALT Make
2. Enter the number corresponding to a desired character on the keypad.
3. ALT Break

After **Emulate ALT+Keypad ON** is selected, you need to choose the code page with which the barcodes were created and to turn **Unicode Encoding** On or Off depending on the encoding used by the application software.



@KBWALTO

**\*\* Emulate ALT+Keypad OFF**



@KBWALTI

**Emulate ALT+Keypad ON**



Since sending a character involves multiple keystroke emulations, this method appears less efficient.

# Example

Supposing **Emulate ALT+Keypad** is ON, **Unicode Encoding** is Off, and **Code Page 1252 (West European Latin)** is selected, barcode data "ADF" (65/208/70) is sent as below:

"A" -- "ALT Make" + "065" + "ALT Break"

"D" -- "ALT Make" + "208" + "ALT Break"

"F" -- "ALT Make" + "070" + "ALT Break"

## Code Page

Code pages define the mapping of character codes to characters. If the data received does not display with the proper characters, it may be because the barcode being scanned was created using a code page that is different from the one the host program is expecting. If this is the case, select the code page with which the barcodes were created by scanning the appropriate barcode below. For PDF417, QR Code, Aztec and Data Matrix, besides setting the code page, you also need to set the character encoding in the "Character Encoding" section in Chapter 7. This feature is only effective when **Emulate ALT+Keypad** is turned on.



@KBWCPG0

**\*\* Code Page 1252 (West European Latin)**



@KBWCPG1

**Code Page 1251 (Cyrillic)**



@KBWCPG2

**Code Page 1250 (Central and East European Latin)**



@KBWCPG3

**Code Page 1253 (Greek)**





@KBWCPG4

**Code Page 1254 (Turkish)**



@KBWCPG5

**Code Page 1255 (Hebrew)**



@KBWCPG6

**Code Page 1256 (Arabic)**



@KBWCPG7

**Code Page 1257 (Baltic)**



@KBWCPG8

**Code Page 1258 (Vietnamese)**



@KBWCPG9

**Code Page 936 (Simplified Chinese,  
GB2312,GBK)**



@KBWCPG10

**Code Page 950 (Traditional Chinese, Big5)**



@KBWCPG11

**Code Page 874 (Thai)**



@KBWCPG12

**Code Page 932 (Japanese, Shift-JIS)**

---

## Unicode Encoding

Different host program may use different character encodings for handling incoming barcode data. For instance, Microsoft Office Word uses Unicode encoding and therefore you should turn **Unicode Encoding** on, whereas Microsoft Office Excel or Notepad uses Code Page encoding and therefore you should turn **Unicode Encoding** off. This feature is only effective when **Emulate ALT+Keypad** is turned on.



@KBWCPU0

**\*\* Off**



@KBWCPUI

**On**

## Function Key Mapping

When **Ctrl+ASCII Mode** is selected, function characters (0x00 - 0x1F) are sent as ASCII sequences.

1. CTRL Make
2. Press function key
3. CTRL Break



@KBWFKM0

**\*\* Disable**



@KBWFKM2;

### Alt+Keypad Mode



@KBWFKM1

### Ctrl+ASCII Mode

## Example

If **Ctrl+ASCII Mode** is selected and other parameters of USB HID Keyboard adopt factory defaults, barcode data "A<HT>(i.e. Horizontal Tab)F" (0x41/0x09/0x46) is sent as below:

"A" - Keystroke "A".

<HT> - "Ctrl Make" + Keystroke "I" + "Ctrl Break"

"F" - Keystroke "F"

For some text editors, "Ctrl I" means italic convert. So the output may be "AF".



**Emulate ALT+Keypad ON** prevails over **Ctrl+ASCII Mode**.

## ASCII Function Key Mapping Table

ASCII Function	ASCII Value (HEX)	Function Key Mapping Disabled	Ctrl+ASCII
NUL	00	Null	Ctrl+@
SOH	01	Keypad Enter	Ctrl+A
STX	02	Caps Lock	Ctrl+B
ETX	03	ALT	Ctrl+C
EOT	04	Null	Ctrl+D
ENQ	05	CTRL	Ctrl+E
ACK	06	Null	Ctrl+F
BEL	07	Enter	Ctrl+G
BS	08	Left Arrow	Ctrl+H
HT	09	Horizontal Tab	Ctrl+I
LF	0A	Down Arrow	Ctrl+J
VT	0B	Vertical Tab	Ctrl+K
FF	0C	Delete	Ctrl+L
CR	0D	Enter	Ctrl+M
SO	0E	Insert	Ctrl+N
SI	0F	Esc	Ctrl+O
DLE	10	F11	Ctrl+P
DC1	11	Home	Ctrl+Q
DC2	12	PrintScreen	Ctrl+R
DC3	13	Backspace	Ctrl+S
DC4	14	tab+shift	Ctrl+T
NAK	15	F12	Ctrl+U
SYN	16	F1	Ctrl+V
ETB	17	F2	Ctrl+W
CAN	18	F3	Ctrl+X
EM	19	F4	Ctrl+Y
SUB	1A	F5	Ctrl+Z
ESC	1B	F6	Ctrl+[
FS	1C	F7	Ctrl+\
GS	1D	F8	Ctrl+]
RS	1E	F9	Ctrl+6
US	1F	F10	Ctrl+-

## ASCII Function Key Mapping Table (Continued)

The last five characters (0x1B~0x1F) in the table above apply to US keyboard layout only. The following chart provides the equivalents of these five characters for other countries.

Country	Ctrl+ASCII					
United States	Ctrl+[	Ctrl+\	Ctrl+]	Ctrl+6	Ctrl+-	
Belgium	Ctrl+[	Ctrl+<	Ctrl+]	Ctrl+6	Ctrl+-	
Scandinavia	Ctrl+8	Ctrl+<	Ctrl+9	Ctrl+6	Ctrl+-	
France	Ctrl+^	Ctrl+8	Ctrl+\$	Ctrl+6	Ctrl+=	
Germany		Ctrl+Ã	Ctrl++	Ctrl+6	Ctrl+-	
Italy		Ctrl+\	Ctrl++	Ctrl+6	Ctrl+-	
Switzerland		Ctrl+<	Ctrl+..	Ctrl+6	Ctrl+-	
United Kingdom	Ctrl+[	Ctrl+ø	Ctrl+]	Ctrl+6	Ctrl+-	
Denmark	Ctrl+8	Ctrl+\	Ctrl+9	Ctrl+6	Ctrl+-	
Norway	Ctrl+8	Ctrl+\	Ctrl+9	Ctrl+6	Ctrl+-	
Spain	Ctrl+[	Ctrl+\	Ctrl+]	Ctrl+6	Ctrl+-	

---

## Inter-Keystroke Delay

This parameter specifies the delay between emulated keystrokes.



@KBWDLY0

**\*\* No Delay**



@KBWDLY40

**Long Delay (40ms)**



@KBWDLY20

**Short Delay (20ms)**

## Caps Lock

The **Caps Lock ON** option can invert upper and lower case characters contained in barcode data. This inversion occurs regardless of the state of Caps Lock key on the host device's keyboard.



@KBWCAPO

**\*\* Caps Lock OFF**



@KBWCAP1

**Caps Lock ON**



**Emulate ALT+Keypad ON/ Convert All to Upper Case/ Convert All to Lower Case** prevails over **Caps Lock ON**.



When the **Caps Lock ON** feature is selected, barcode data "AbC" is transmitted as "aBc".

---

## Convert Case

You may scan the appropriate barcode below to convert all barcode data to your desired case.



@KBWCAS0

**\*\* No Case Conversion**



@KBWCAS1

**Convert All to Upper Case**



@KBWCAS2

**Convert All to Lower Case**

**E**  
*xample*

When the **Convert All to Lower Case** feature is enabled, barcode data "AbC" is transmitted as "abc".



If **Emulate ALT+Keypad ON** is selected, **Convert All to Lower Case** and **Convert All to Upper Case** do not function.

## Emulate Numeric Keypad





**Do Not Emulate Numeric Keypad 1:** Sending a number (0-9) is emulated as keystroke(s) on main keyboard.

**Emulate Numeric Keypad 1:** Sending a number (0-9) is emulated as keystroke(s) on numeric keypad. The state of Num Lock on the simulated numeric keypad is determined by its equivalent on the host device. If Num Lock on the host device is turned off, the output of simulated numeric keypad is function key instead of number.

**Do Not Emulate Numeric Keypad 2:** Sending "+", "-", "\*", and "/" is emulated as keystroke(s) on main keyboard.

**Emulate Numeric Keypad 2:** Sending "+", "-", "\*", and "/" is emulated as keystroke(s) on numeric keypad.



@KBWNUM0

**\*\* Do Not Emulate Numeric Keypad 1**



@KBWNUM1

**Emulate Numeric Keypad 1**



@KBWNCHO

**\*\* Do Not Emulate Numeric Keypad 2**



@KBWNCHI

**Emulate Numeric Keypad 2**



**Emulate ALT+Keypad ON** prevails over **Emulate Numeric Keypad**.



Supposing the **Emulate Numeric Keypad 1** feature is enabled:

if Num Lock on the host device is ON, "A4.5" is transmitted as "A4.5";

if Num Lock on the host device is OFF, "A4.5" is transmitted as ".A":

1. "A" is sent on main keyboard;
2. "4" is sent as the function key "Cursor Move to Left";
3. "." is sent on main keyboard;
4. "5" is not sent as it does not correspond to any function key.

---

## Polling Rate

This parameter specifies the polling rate for a USB keyboard. If the Host drops characters, change the polling rate to a bigger value.



@KBWPOR0

**1ms**



@KBWPOR1

**2ms**



@KBWPOR2

**3ms**



@KBWPOR3

**\*\* 4ms**



@KBWPOR4

**5ms**



@KBWPOR5

**6ms**



@KBWPOR6

**7ms**



@KBWPOR7

**8ms**



@KBWPOR8

**9ms**



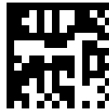
@KBWPOR9

**10ms**

---

## USB CDC

If your cradle is connected to the USB port on a host device, the USB CDC feature allows the host device to receive data in the way as a serial port does. A driver is needed when using this feature. You may download it from our website at [www.newlandaidc.com](http://www.newlandaidc.com).



@INTERF8

USB CDC

## USB HID-POS

### Introduction

The HID-POS interface is recommended for new application programs. It can send up to 56 characters in a single USB report and appears more efficient than keyboard emulation.

Features:

- ✧ HID based, no custom driver required.
- ✧ Way more efficient in communication than keyboard emulation and traditional RS-232 interface.

**Note:** HID-POS does not require a custom driver. However, a HID interface on Windows 98 does. All HID interfaces employ standard driver provided by the operating system. Use defaults when installing the driver.



@INTERF5

HID POS

## Access the Scanner with Your Program

Use CreateFile to access the scanner as a HID device and then use ReadFile to deliver the scanned data to the application program. Use WriteFile to send data to the scanner.

For detailed information about USB and HID interfaces, go to [www.USB.org](http://www.USB.org).

## Acquire Scanned Data

After a barcode is decoded, the scanner sends an input report as below:

	Bit							
Byte	7	6	5	4	3	2	1	0
0	Report ID = 0x02							
1	Barcode Length							
2-57	Decoded Data (1-56)							
58-61	Reserved							
62	Newland Symbology Identifier or N/C: 0x00							
63	-	-	-	-	-	-	-	Decoded data continued

## Send Command to the Scanner

This output report is used to send commands to the scanner. All programming commands can be used.

	Bit							
Byte	7	6	5	4	3	2	1	0
0	Report ID = 0x04							
1	Length of the Data("Output Data" field)							

## VID/PID

USB uses VID (Vendor ID) and PID (Product ID) to identify and locate a device. The VID is assigned by USB Implementers Forum. Newland's vendor ID is 1EAB (Hex). A range of PIDs are used for each Newland product family. Every PID contains a base number and interface type (keyboard, COM port, etc.).

<b>Product</b>	<b>Interface</b>	<b>PID (Hex)</b>	<b>PID (Dec)</b>
NVH220B	USB HID Keyboard	1403	5123
	USB CDC	1406	5126
	USB HID-POS	1410	5136



---

## Chapter 7 Symbologies

### Introduction

Every symbology (barcode type) has its own unique attributes. This chapter provides programming barcodes for configuring the scanner so that it can identify various symbologies. It is recommended to disable those that are rarely used to increase the efficiency of the scanner.

### Global Settings

#### Enable/Disable All Symbologies

If the **Disable All Symbologies** feature is enabled, the scanner will not be able to read any non-programming barcodes except the programming barcodes.



@ALLENAT

**Enable All Symbologies**



@ALLENA0

**Disable All Symbologies**

---

---

## Enable/Disable 1D Symbologies



@ALL1DC1

**Enable 1D Symbologies**



@ALL1DC0

**Disable 1D Symbologies**

## Enable/Disable 2D Symbologies



@ALL2DC1

**Enable 2D Symbologies**



@ALL2DC0

**Disable 2D Symbologies**

---

## Image Brightness Adaptation

The two parameters of image brightness adaptation 1 and 2, which are linkage relations, are set to adapt to the brightness of the image. When the image is too dark, two parameters can be adjusted down at the same time; When the image is too bright, you can try to raise both parameters at the same time.



@CCFCTV

**Image Brightness Adaptation 1**



@CCFMTV

**Image Brightness Adaptation 2**

## 1D Decoding Complexity

The Decoding Complexity parameter selects the decoding algorithm according to the printing/marking technique used to create the symbol and on the overall printing/marking quality.

- ✧ Low: For no stain, wrinkle and other high-quality barcodes;
- ✧ Medium: Bar code with general quality such as certain dirt, fold, etc;
- ✧ High: For Bar code with poor printing quality.



@CCFIDC0

**Low**



@CCFIDC2

**High**



@CCFIDC1

**\*\*Medium**

## 1D Inverse



@CCFIV0

**\*\*Regular**



@CCFIV2

**Regular and Inverse**

## Read Multi-barcodes on an Image

Read Multi-barcodes on an Image enables a 2D imaging scanner to scan all the bar codes within a label, and then modify and transmit all of them to a host application. For working examples Read Multi-barcodes on an Image that can be programmed to a scanner, see the Nset User's Manual.



@ALLMENO

**\*\*Enable**



@ALLMENO

**Disable**

---

## Code 11

### Restore Factory Defaults



@C11DEF

**Restore the Factory Defaults of Code 11**

### Enable/Disable Code 11



@C11ENA1

**Enable Code 11**



@C11ENA0

**\*\* Disable Code 11**



If the scanner fails to identify Code 11 barcodes, you may first try this solution by scanning the **Enter Setup** barcode and then **Enable Code 11** barcode.

---

## Set Length Range for Code 11

The scanner can be configured to only decode Code 11 barcodes with lengths that fall between (inclusive) the minimum and maximum lengths. To accomplish it, you need to set the minimum and maximum lengths.



@C11MIN

### Set the Minimum Length (Default: 4)



@C11MAX

### Set the Maximum Length (Default: 48)



If minimum length is set to be greater than maximum length, the scanner only decodes Code 11 barcodes with either the minimum or maximum length. If minimum length is same as maximum length, only Code 11 barcodes with that length are to be decoded.



#### Set the scanner to decode Code 11 barcodes containing between 8 and 12 characters:

1. Scan the **Set the Minimum Length** barcode.
2. Scan the numeric barcode "8" from the "Digit Barcodes" section in Appendix.
3. Scan the **Save** barcode from the "Save/Cancel Barcodes" section in Appendix.
4. Scan the **Set the Maximum Length** barcode.
5. Scan the numeric barcodes "1" and "2" from the "Digit Barcodes" section in Appendix.
6. Scan the **Save** barcode from the "Save/Cancel Barcodes" section in Appendix.

---

---

## Check Character Verification

Check characters are optional for Code 11 and can be added as the last one or two characters, which are calculated values used to verify the integrity of the data.

If the **Disable** option is enabled, the scanner transmits Code 11 barcodes as is.



@C11CHK0

**Disable**



@C11CHK1

**\*\* One Check Character, MOD11**



@C11CHK2

**Two Check Characters, MOD11/MOD11**



@C11CHK3

**Two Check Characters, MOD11/MOD9**



@C11CHK4

**One Check Character, MOD11 (Len<=10)**

**Two Check Characters, MOD11/MOD11(Len>10)**





@C11CHK5

**One Check Character, MOD11 (Len<=10)**

**Two Check Characters, MOD11/MOD9  
(Len>10)**

---

## Transmit Check Character



@C11TCK0

### Do Not Transmit Code 11 Check Character



@C11TCK1

### \*\* Transmit Code 11 Check Character



If you select a check character algorithm and the **Do Not Transmit Check Character** option, Code 11 barcodes with a length that is less than the configured minimum length after having the check character(s) excluded will not be decoded. (For example, when the **One Check Character, MOD11** and **Do Not Transmit Check Character** options are enabled and the minimum length is set to 4, Code 11 barcodes with a total length of 4 characters including the check character cannot be read.)

---

## Code 128

### Restore Factory Defaults



@128DEF

**Restore the Factory Defaults of Code 128**

### Enable/Disable Code 128



@128ENA1

**\*\* Enable Code 128**



@128ENA0

**Disable Code 128**



If the scanner fails to identify Code 128 barcodes, you may first try this solution by scanning the **Enable Code 128** barcode.

---

## Set Length Range for Code 128

The scanner can be configured to only decode Code 128 barcodes with lengths that fall between (inclusive) the minimum and maximum lengths. To accomplish it, you need to set the minimum and maximum lengths.



@128MIN

### Set the Minimum Length (Default: 1)



@128MAX

### Set the Maximum Length (Default: 48)



If minimum length is set to be greater than maximum length, the scanner only decodes Code 128 barcodes with either the minimum or maximum length. If minimum length is same as maximum length, only Code 128 barcodes with that length are to be decoded.



### Set the scanner to decode Code 128 barcodes containing between 8 and 12 characters:

1. Scan the **Set the Minimum Length** barcode.
2. Scan the numeric barcode "8" from the "Digit Barcodes" section in Appendix.
3. Scan the **Save** barcode from the "Save/Cancel Barcodes" section in Appendix.
4. Scan the **Set the Maximum Length** barcode.
5. Scan the numeric barcodes "1" and "2" from the "Digit Barcodes" section in Appendix.
6. Scan the **Save** barcode from the "Save/Cancel Barcodes" section in Appendix.

---

## Code 39

### Restore Factory Defaults



@C39DEF

**Restore the Factory Defaults of Code 39**

### Enable/Disable Code 39



@C39ENA1

**\*\* Enable Code 39**



@C39ENA0

**Disable Code 39**



If the scanner fails to identify Code 39 barcodes, you may first try this solution by scanning the **Enable Code 39** barcode.

---

## Set Length Range for Code 39

The scanner can be configured to only decode Code 39 barcodes with lengths that fall between (inclusive) the minimum and maximum lengths. To accomplish it, you need to set the minimum and maximum lengths.



@C39MIN

### Set the Minimum Length (Default: 1)



@C39MAX

### Set the Maximum Length (Default: 48)



If minimum length is set to be greater than maximum length, the scanner only decodes Code 39 barcodes with either the minimum or maximum length. If minimum length is same as maximum length, only Code 39 barcodes with that length are to be decoded.



### Set the scanner to decode Code 39 barcodes containing between 8 and 12 characters:

1. Scan the **Set the Minimum Length** barcode.
2. Scan the numeric barcode "8" from the "Digit Barcodes" section in Appendix.
3. Scan the **Save** barcode from the "Save/Cancel Barcodes" section in Appendix.
4. Scan the **Set the Maximum Length** barcode.
5. Scan the numeric barcodes "1" and "2" from the "Digit Barcodes" section in Appendix.
6. Scan the **Save** barcode from the "Save/Cancel Barcodes" section in Appendix.

---

## Check Character Verification

A check character is optional for Code 39 and can be added as the last character. It is a calculated value used to verify the integrity of the data.

- ✧ **Disable:** The scanner transmits Code 39 barcodes as is.
- ✧ **Do Not Transmit Check Character After Verification:** The scanner checks the integrity of all Code 39 barcodes to verify that the data complies with the check character algorithm. Barcodes passing the check will be transmitted except the last digit, whereas those failing it will not be transmitted.
- ✧ **Transmit Check Character After Verification:** The scanner checks the integrity of all Code 39 barcodes to verify that the data complies with the check character algorithm. Barcodes passing the check will be transmitted, whereas those failing it will not be transmitted.



@C39CHK0

**\*\* Disable**



@C39CHK1

**Do Not Transmit Check Character After Verification**



@C39CHK2

**Transmit Check Character After Verification**



If the **Do Not Transmit Check Character After Verification** option is enabled, Code 39 barcodes with a length that is less than the configured minimum length after having the check character excluded will not be decoded. (For example, when the **Do Not Transmit**

---

**Check Character After Verification** option is enabled and the minimum length is set to 4, Code 39 barcodes with a total length of 4 characters including the check character cannot be read.)

### **Transmit Start/Stop Character**

Code 39 uses an asterisk (\*) for both the start and the stop characters. You can choose whether or not to transmit the start/stop characters by scanning the appropriate barcode below.



@C39TSC0

**\*\* Do Not Transmit Start/Stop Character**



@C39TSC1

**Transmit Start/Stop Character**

### **Enable/Disable Code 39 Full ASCII**

The scanner can be configured to identify all ASCII characters by scanning the appropriate barcode below.



@C39ASC0

**\*\* Disable Code 39 Full ASCII**



@C39ASC1

**Enable Code 39 Full ASCII**



---

## GS1-128 (UCC/EAN-128)

### Restore Factory Defaults



@GSIDF

**Restore the Factory Defaults of GS1-128**

### Enable/Disable GS1-128



@GS1ENAI

**\*\* Enable GS1-128**



@GS1ENAO

**Disable GS1-128**



If the scanner fails to identify GS1-128 barcodes, you may first try this solution by scanning the **Enable GS1-128** barcode.

---

---

## AIM 128

### Restore Factory Defaults



@AIMDEF

**Restore the Factory Defaults of AIM 128**

### Enable/Disable AIM 128



@AIMENA1

**Enable AIM128**



@AIMENA0

**\*\* Disable AIM 128**



If the scanner fails to identify AIM 128 barcodes, you may first try this solution by scanning the

---

**Enable AIM 128** barcode.

### Set Length Range for AIM 128

The scanner can be configured to only decode AIM 128 barcodes with lengths that fall between (inclusive) the minimum and maximum lengths. To accomplish it, you need to set the minimum and maximum lengths.



@AIMMIN

**Set the Minimum Length (Default: 1)**



@AIMMAX

**Set the Maximum Length (Default: 48)**



If minimum length is set to be greater than maximum length, the scanner only decodes GS1-128 barcodes with either the minimum or maximum length. If minimum length is same as maximum length, only GS1-128 barcodes with that length are to be decoded.

**E**  
*sample*

**Set the scanner to decode AIM 128 barcodes containing between 8 and 12 characters:**

1. Scan the **Set the Minimum Length** barcode.
2. Scan the numeric barcode "8" from the "Digit Barcodes" section in Appendix.
3. Scan the **Save** barcode from the "Save/Cancel Barcodes" section in Appendix.
4. Scan the **Set the Maximum Length** barcode.
5. Scan the numeric barcodes "1" and "2" from the "Digit Barcodes" section in Appendix.

---

6. Scan the **Save** barcode from the “Save/Cancel Barcodes” section in Appendix.

## ISBT 128

### Restore Factory Defaults



@IBTDEF

**Restore the Factory Defaults of ISBT 128**

### Enable/Disable ISBT 128



@IBTENAI

**Enable ISBT 128**



@IBTENA0

**\*\* Disable ISBT 128**



If the scanner fails to identify ISBT-128 barcodes, you may first try this solution by scanning the **Enable ISBT-128** barcode.

---

## Codabar

### Restore Factory Defaults



@CBADEF

**Restore the Factory Defaults of Codabar**

### Enable/Disable Codabar



@CBAENA1

**\*\* Enable Codabar**



@CBAENA0

**Disable Codabar**



If the scanner fails to identify Codabar barcodes, you may first try this solution by scanning the **Enable Codabar** barcode.

---

## Set Length Range for Codabar

The scanner can be configured to only decode Codabar barcodes with lengths that fall between (inclusive) the minimum and maximum lengths. To accomplish it, you need to set the minimum and maximum lengths.



@CBAMIN

### Set the Minimum Length (Default: 2)



@CBAMAX

### Set the Maximum Length (Default: 60)



If minimum length is set to be greater than maximum length, the scanner only decodes Codabar barcodes with either the minimum or maximum length. If minimum length is same as maximum length, only Codabar barcodes with that length are to be decoded.

## Example

### Set the scanner to decode Codabar barcodes containing between 8 and 12 characters:

1. Scan the **Set the Minimum Length** barcode.
2. Scan the numeric barcode "8" from the "Digit Barcodes" section in Appendix.
3. Scan the **Save** barcode from the "Save/Cancel Barcodes" section in Appendix.
4. Scan the **Set the Maximum Length** barcode.
5. Scan the numeric barcodes "1" and "2" from the "Digit Barcodes" section in Appendix.
6. Scan the **Save** barcode from the "Save/Cancel Barcodes" section in Appendix.

---

## Check Character Verification

A check character is optional for Codabar and can be added as the last character. It is a calculated value used to verify the integrity of the data.

- ✧ **Disable:** The scanner transmits Codabar barcodes as is.
- ✧ **Do Not Transmit Check Character After Verification:** The scanner checks the integrity of all Codabar barcodes to verify that the data complies with the check character algorithm. Barcodes passing the check will be transmitted except the last digit, whereas those failing it will not be transmitted.
- ✧ **Transmit Check Character After Verification:** The scanner checks the integrity of all Codabar barcodes to verify that the data complies with the check character algorithm. Barcodes passing the check will be transmitted, whereas those failing it will not be transmitted.



@CBACHK0

**\*\* Disable**



@CBACHK1

**Do Not Transmit Check Character After Verification**



@CBACHK2

**Transmit Check Character After Verification**



If the **Do Not Transmit Check Character After Verification** option is enabled, Codabar barcodes with a length that is less than the configured minimum length after having the check character excluded will not be decoded. (For example, when the **Do Not Transmit**

---

---

**Check Character After Verification** option is enabled and the minimum length is set to 4, Codabar barcodes with a total length of 4 characters including the check character cannot be read.)



---

## Start/Stop Character

You can set the start/stop characters and choose whether or not to transmit the start/stop characters by scanning the appropriate barcode below.



@CBATSC0

**\*\* Do Not Transmit Start/Stop Character**



@CBATSC1

**Transmit Start/Stop Character**



@CBASCF0

**\*\* ABCD/ABCD as the Start/Stop Character**



@CBASCF1

**ABCD/TN\*E as the Start/Stop Character**



@CBASCF2

**abcd/abcd as the Start/Stop Character**



@CBASCF3

**abcd/tn\*e as the Start/Stop Character**

---

## Code 93

### Restore Factory Defaults



@C93DEF

**Restore the Factory Defaults of Code 93**

### Enable/Disable Code 93



@C93ENA1

**Enable Code 93**



@C93ENA0

**\*\* Disable Code 93**



If the scanner fails to identify Code 93 barcodes, you may first try this solution by scanning the **Enable Code 93** barcode.

---

## Set Length Range for Code 93

The scanner can be configured to only decode Code 93 barcodes with lengths that fall between (inclusive) the minimum and maximum lengths. To accomplish it, you need to set the minimum and maximum lengths.



@C93MIN

### Set the Minimum Length (Default: 1)



@C93MAX

### Set the Maximum Length (Default: 48)



If minimum length is set to be greater than maximum length, the scanner only decodes Code 93 barcodes with either the minimum or maximum length. If minimum length is same as maximum length, only Code 93 barcodes with that length are to be decoded.



### Set the scanner to decode Code 93 barcodes containing between 8 and 12 characters:

1. Scan the **Set the Minimum Length** barcode.
2. Scan the numeric barcode "8" from the "Digit Barcodes" section in Appendix.
3. Scan the **Save** barcode from the "Save/Cancel Barcodes" section in Appendix.
4. Scan the **Set the Maximum Length** barcode.
5. Scan the numeric barcodes "1" and "2" from the "Digit Barcodes" section in Appendix.
6. Scan the **Save** barcode from the "Save/Cancel Barcodes" section in Appendix.

---

## Check Character Verification

Check characters are optional for Code 93 and can be added as the last two characters, which are calculated values used to verify the integrity of the data.

- ✧ **Disable:** The scanner transmits Code 93 barcodes as is.
- ✧ **Do Not Transmit Check Character After Verification:** The scanner checks the integrity of all Code 93 barcodes to verify that the data complies with the check character algorithm. Barcodes passing the checks will be transmitted except the last two digits, whereas those failing them will not be transmitted.
- ✧ **Transmit Check Character After Verification:** The scanner checks the integrity of all Code 93 barcodes to verify that the data complies with the check character algorithm. Barcodes passing the checks will be transmitted, whereas those failing them will not be transmitted.



@C93CHK0

**Disable**



@C93CHK1

**\*\* Do Not Transmit Check Character After Verification**



@C93CHK2

### Transmit Check Character After Verification



If the **Do Not Transmit Check Character After Verification** option is enabled, Code 93 barcodes with a length that is less than the configured minimum length after having the two check characters excluded will not be decoded. (For example, when the **Do Not Transmit**

---

---

**Check Character After Verification** option is enabled and the minimum length is set to 4, Code 93 barcodes with a total length of 4 characters including the two check characters cannot be read.

---

## UPC-A

### Restore Factory Defaults



@UPADEF

**Restore the Factory Defaults of UPC-A**

### Enable/Disable UPC-A



@UPAENA1

**\*\* Enable UPC-A**



@UPAENA0

**Disable UPC-A**



If the scanner fails to identify UPC-A barcodes, you may first try this solution by scanning the **Enable UPC-A** barcode.

### Transmit Check Character

UPC-A is 13 digits in length with the last one as its check character used to verify the integrity of the data.



@UPCHK2

**\*\* Transmit UPC-A Check Character**



@UPCHK1

**Do Not Transmit UPC-A Check Character**

## 2-Digit Add-On Code

A UPC-A barcode can be augmented with a two-digit add-on code to form a new one. In the example below, the part surrounded by blue dotted line is a UPC-A barcode while the part circled by red dotted line is a two-digit add-on code.



@UPAAD20

**\*\* Disable 2-Digit Add-On Code**



@UPAAD21

**Enable 2-Digit Add-On Code**





**Disable 2-Digit Add-On Code:** The scanner decodes UPC-A and ignores the add-on code when presented with a UPC-A plus 2-digit add-on barcode. It can also decode UPC-A barcodes without 2-digit add-on codes.

**Enable 2-Digit Add-On Code:** The scanner decodes a mix of UPC-A barcodes with and without 2-digit add-on codes.

---

## 5-Digit Add-On Code

A UPC-A barcode can be augmented with a five-digit add-on code to form a new one. In the example below, the part surrounded by blue dotted line is a UPC-A barcode while the part circled by red dotted line is a five-digit add-on code.



@UPAAD50

**\*\* Disable 5-Digit Add-On Code**



@UPAAD51

**Enable 5-Digit Add-On Code**



**Disable 5-Digit Add-On Code:** The scanner decodes UPC-A and ignores the add-on code when presented with a UPC-A plus 5-digit add-on barcode. It can also decode UPC-A barcodes without 5-digit add-on codes.

**Enable 5-Digit Add-On Code:** The scanner decodes a mix of UPC-A barcodes with and without 5-digit add-on codes.

## Add-On Code Required

When **UPC-A Add-On Code Required** is selected, the scanner will only read UPC-A barcodes that contain add-on codes.



@UPAREQ1

**UPC-A Add-On Code Required**



@UPAREQ0

**\*\* UPC-A Add-On Code Not Required**

### **Add-On Code Separator**

When this feature is on, there is a space between the data from the barcode and the data from the add-on code. When turned off, there is no space.



@UPASEP0

**\*\* Off**



@UPASEP1

**On**

### **Transmit Preamble Character**

Preamble characters (Country Code and System Character) can be transmitted as part of a UPC-A barcode. Select one of the following options for transmitting UPC-A preamble to the host device: transmit system character only, transmit system character and country code ("0" for USA), or transmit no preamble.



@UPAPRE0

**\*\* No Preamble**



@UPAPRE1

**System Character**



@UPAPRE2

**System Character & Country Code**

## **UPC-E**

**Restore Factory Defaults**



@UPEDEF

**Restore the Factory Defaults of UPC-E**

**Enable/Disable UPC-E**



@UPEENAI

**\*\* Enable UPC-E**



@UPEENAO

**Disable UPC-E**



@UPEEN01

**\*\* Enable UPC-E0**



@UPEEN00

**Disable UPC-E0**



@UPEEN11

**Enable UPC-E1**



@UPEEN10

**\*\* Disable UPC-E1**

---

## Transmit Check Character

UPC-E is 8 digits in length with the last one as its check character used to verify the integrity of the data.



@UPECHK2

### \*\* Transmit UPC-E Check Character



@UPECHK1

### Do Not Transmit UPC-E Check Character

## 2-Digit Add-On Code

A UPC-E barcode can be augmented with a two-digit add-on code to form a new one. In the example below, the part surrounded by blue dotted line is a UPC-E barcode while the part circled by red dotted line is a two-digit add-on code.



@UPEAD20

### \*\* Disable 2-Digit Add-On Code



@UPEAD21

### Enable 2-Digit Add-On Code



**Disable 2-Digit Add-On Code:** The scanner decodes UPC-E and ignores the add-on code when presented with a UPC-E plus 2-digit add-on barcode. It can also decode UPC-E barcodes without 2-digit add-on codes.

**Enable 2-Digit Add-On Code:** The scanner decodes a mix of UPC-E barcodes with and without 2-digit add-on codes.

### 5-Digit Add-On Code

A UPC-E barcode can be augmented with a five-digit add-on code to form a new one. In the example below, the part surrounded by blue dotted line is a UPC-E barcode while the part circled by red dotted line is a five-digit add-on code.



@UPEAD50

### \*\* Disable 5-Digit Add-On Code



@UPEAD51

### Enable 5-Digit Add-On Code



**Disable 5-Digit Add-On Code:** The scanner decodes UPC-E and ignores the add-on code when presented with a UPC-E plus 5-digit add-on barcode. It can also decode UPC-E barcodes without 5-digit add-on codes.

**Enable 5-Digit Add-On Code:** The scanner decodes a mix of UPC-E barcodes with and without 5-digit add-on codes.



---

## Add-On Code Required

When **UPC-E Add-On Code Required** is selected, the scanner will only read UPC-E barcodes that contain add-on codes.



@UPEREQ1

**UPC-E Add-On Code Required**



@UPEREQ0

**\*\* UPC-E Add-On Code Not Required**

## Add-On Code Separator

When this feature is on, there is a space between the data from the barcode and the data from the add-on code. When turned off, there is no space.



@UPESEP0

**\*\* Off**



@UPESEP1

**On**

---

## Transmit Preamble Character

Preamble characters (Country Code and System Character) can be transmitted as part of a UPC-E barcode. Select one of the following options for transmitting UPC-E preamble to the host device: transmit system character only, transmit system character and country code ("0" for USA), or transmit no preamble.



@UPEPRE1

**\*\* System Character**



@UPEPRE0

**No Preamble**



@UPEPRE2

**System Character & Country Code**

## Convert UPC-E to UPC-A

**Convert UPC-E to UPC-A:** Convert UPC-E (zero suppressed) decoded data to UPC-A format before transmission. After conversion, the data follows UPC-A format and is affected by UPC-A programming selections (e.g., Preamble, Check Character).

**Do Not Convert UPC-E to UPC-A:** UPC-E decoded data is transmitted as UPC-E data, without conversion.



@UPEEXP0

**\*\* Do Not Convert UPC-E to UPC-A**



@UPEEXP1

**Convert UPC-E to UPC-A**

## **EAN-8**

**Restore Factory Defaults**



@EA8DEF

**Restore the Factory Defaults of EAN-8**

**Enable/Disable EAN-8**



@EA8ENA1

**\*\* Enable EAN-8**



@EA8ENAO

### **Disable EAN-8**



If the scanner fails to identify EAN-8 barcodes, you may first try this solution by scanning the **Enable EAN-8** barcode.

### **Transmit Check Character**

EAN-8 is 8 digits in length with the last one as its check character used to verify the integrity of the data.



@EA8CHK2

### **\*\* Transmit EAN-8 Check Character**



@EA8CHK1

### **Do Not Transmit EAN-8 Check Character**

### **2-Digit Add-On Code**

An EAN-8 barcode can be augmented with a two-digit add-on code to form a new one. In the example below, the part surrounded by blue dotted line is an EAN-8 barcode while the part circled by red dotted line is a two-digit add-on code.



@EA8AD20

**\*\* Disable 2-Digit Add-On Code**



@EA8AD21

**Enable 2-Digit Add-On Code**



**Disable 2-Digit Add-On Code:** The scanner decodes EAN-8 and ignores the add-on code when presented with an EAN-8 plus 2-digit add-on barcode. It can also decode EAN-8 barcodes without 2-digit add-on codes.

**Enable 2-Digit Add-On Code:** The scanner decodes a mix of EAN-8 barcodes with and without 2-digit add-on codes.

---

## 5-Digit Add-On Code

An EAN-8 barcode can be augmented with a five-digit add-on code to form a new one. In the example below, the part surrounded by blue dotted line is an EAN-8 barcode while the part circled by red dotted line is a five-digit add-on code.



@EA8AD50

**\*\* Disable 5-Digit Add-On Code**



@EA8AD51

**Enable 5-Digit Add-On Code**



**Disable 5-Digit Add-On Code:** The scanner decodes EAN-8 and ignores the add-on code when presented with an EAN-8 plus 5-digit add-on barcode. It can also decode EAN-8 barcodes without 5-digit add-on codes.

**Enable 5-Digit Add-On Code:** The scanner decodes a mix of EAN-8 barcodes with and without 5-digit add-on codes.

## Add-On Code Required

When **EAN-8 Add-On Code Required** is selected, the scanner will only read EAN-8 barcodes that contain add-on codes.



@EA8REQ1

**EAN-8 Add-On Code Required**



@EA8REQ0

**\*\* EAN-8 Add-On Code Not Required**

### **Add-On Code Separator**

When this feature is on, there is a space between the data from the barcode and the data from the add-on code. When turned off, there is no space.



@EA8SEPO

**\*\* Off**



@EA8SEPI

**On**

### **Convert EAN-8 to EAN-13**

**Convert EAN-8 to EAN-13:** Convert EAN-8 decoded data to EAN-13 format before transmission. After conversion, the data follows EAN-13 format and is affected by EAN-13 programming selections (e.g., Check Character).

**Do Not Convert EAN-8 to EAN-13:** EAN-8 decoded data is transmitted as EAN-8 data, without conversion.



@EA8EXPO

**\*\* Do Not Convert EAN-8 to EAN-13**



@EA8EXPI

**Convert EAN-8 to EAN-13**



---

## EAN-13

### Restore Factory Defaults



@E13DEF

**Restore the Factory Defaults of EAN-13**

### Enable/Disable EAN-13



@E13ENA1

**\*\* Enable EAN-13**



@E13ENA0

**Disable EAN-13**



If the scanner fails to identify EAN-13 barcodes, you may first try this solution by scanning the **Enable EAN-13** barcode.

---

## Transmit Check Character



@E13CHK2

**\*\* Transmit EAN-13 Check Character**



@E13CHK1

**Do Not Transmit EAN-13 Check Character**

## 2-Digit Add-On Code

An EAN-13 barcode can be augmented with a two-digit add-on code to form a new one. In the example below, the part surrounded by blue dotted line is an EAN-13 barcode while the part circled by red dotted line is a two-digit add-on code.



@E13AD20

**\*\* Disable 2-Digit Add-On Code**



@E13AD21

### **Enable 2-Digit Add-On Code**



**Disable 2-Digit Add-On Code:** The scanner decodes EAN-13 and ignores the add-on code when presented with an EAN-13 plus 2-digit add-on barcode. It can also decode EAN-13 barcodes without 2-digit add-on codes.

**Enable 2-Digit Add-On Code:** The scanner decodes a mix of EAN-13 barcodes with and without 2-digit add-on codes.

---

---

## 5-Digit Add-On Code

An EAN-13 barcode can be augmented with a five-digit add-on code to form a new one. In the example below, the part surrounded by blue dotted line is an EAN-13 barcode while the part circled by red dotted line is a five-digit add-on code.



@E13AD50

**\*\* Disable 5-Digit Add-On Code**



@E13AD51

**Enable 5-Digit Add-On Code**



**Disable 5-Digit Add-On Code:** The scanner decodes EAN-13 and ignores the add-on code when presented with an EAN-13 plus 5-digit add-on barcode. It can also decode EAN-13 barcodes without 5-digit add-on codes.

**Enable 5-Digit Add-On Code:** The scanner decodes a mix of EAN-13 barcodes with and without 5-digit add-on codes.

## Add-On Code Required

When **EAN-13 Add-On Code Required** is selected, the scanner will only read EAN-13 barcodes that contain add-on codes.



@E13REQ0

**\*\* EAN-13 Add-On Code Not Required**



@E13REQ1

**EAN-13 Add-On Code Required**

### **Add-On Code Separator**

When this feature is on, there is a space between the data from the barcode and the data from the add-on code. When turned off, there is no space.



@E13SEP0

**\*\* Off**



@E13SEP1

**On**

### **EAN-13 Beginning with 290 Add-On Code Required**

This setting programs the scanner to require an add-on code (2-digit or 5-digit) on EAN-13 barcodes that begin with "290". The following settings can be programmed:

**Require Add-On Code:** All EAN-13 barcodes that begin with "290" must have a 2-digit or 5-digit add-on code. The EAN-13 barcode with the add-on code is then transmitted. If the required add-on code is not found, the

---

EAN-13 barcode is discarded.

**Do Not Require Add-On Code:** If you have selected **Require Add-On Code**, and you want to disable this feature, scan **Do Not Require Add-On Code**. EAN-13 barcodes are handled, depending on your selection for the “Add-On Code Required” feature.



@E132900

**\*\* Do Not Require Add-On Code**



@E132901

**Require Add-On Code**

### **EAN-13 Beginning with 378/379 Add-On Code Required**

This setting programs the scanner to require an add-on code (2-digit or 5-digit) on EAN-13 barcodes that begin with a “378” or “379”. The following settings can be programmed:

**Require Add-On Code:** All EAN-13 barcodes that begin with a “378” or “379” must have a 2-digit or 5-digit add-on code. The EAN-13 barcode with the add-on code is then transmitted. If the required add-on code is not found, the EAN-13 barcode is discarded.

**Do Not Require Add-On Code:** If you have selected **Require Add-On Code**, and you want to disable this feature, scan **Do Not Require Add-On Code**. EAN-13 barcodes are handled, depending on your selection for the “Add-On Code Required” feature.



@E133780

**\*\* Do Not Require Add-On Code**



@E133781

### **Require Add-On Code**

## **EAN-13 Beginning with 414/419 Add-On Code Required**

This setting programs the scanner to require an add-on code (2-digit or 5-digit) on EAN-13 barcodes that begin with a “414” or “419”. The following settings can be programmed:

**Require Add-On Code:** All EAN-13 barcodes that begin with a “414” or “419” must have a 2-digit or 5-digit add-on code. The EAN-13 barcode with the add-on code is then transmitted. If the required add-on code is not found, the EAN-13 barcode is discarded.

**Do Not Require Add-On Code:** If you have selected **Require Add-On Code**, and you want to disable this feature, scan **Do Not Require Add-On Code**. EAN-13 barcodes are handled, depending on your selection for the “Add-On Code Required” feature.



@E134140

### **\*\* Do Not Require Add-On Code**



@E134141

### **Require Add-On Code**

## **EAN-13 Beginning with 434/439 Add-On Code Required**

This setting programs the scanner to require an add-on code (2-digit or 5-digit) on EAN-13 barcodes that begin with a “434” or “439”. The following settings can be programmed:

**Require Add-On Code:** All EAN-13 barcodes that begin with a “434” or “439” must have a 2-digit or 5-digit add-on code. The EAN-13 barcode with the add-on code is then transmitted. If the required add-on code is

---

not found, the EAN-13 barcode is discarded.

**Do Not Require Add-On Code:** If you have selected **Require Add-On Code**, and you want to disable this feature, scan **Do Not Require Add-On Code**. EAN-13 barcodes are handled, depending on your selection for the “Add-On Code Required” feature.



@E134340

**\*\* Do Not Require Add-On Code**



@E134341

**Require Add-On Code**

### **EAN-13 Beginning with 977 Add-On Code Required**

This setting programs the scanner to require an add-on code (2-digit or 5-digit) on EAN-13 barcodes that begin with “977”. The following settings can be programmed:

**Require Add-On Code:** All EAN-13 barcodes that begin with “977” must have a 2-digit or 5-digit add-on code. The EAN-13 barcode with the add-on code is then transmitted. If the required add-on code is not found, the EAN-13 barcode is discarded.

**Do Not Require Add-On Code:** If you have selected **Require Add-On Code**, and you want to disable this feature, scan **Do Not Require Add-On Code**. EAN-13 barcodes are handled, depending on your selection for the “Add-On Code Required” feature.



@E139770

**\*\* Do Not Require Add-On Code**



@E139771

**Require Add-On Code**



---

## EAN-13 Beginning with 978 Add-On Code Required

This setting programs the scanner to require an add-on code (2-digit or 5-digit) on EAN-13 barcodes that begin with “978”. The following settings can be programmed:

**Require Add-On Code:** All EAN-13 barcodes that begin with “978” must have a 2-digit or 5-digit add-on code. The EAN-13 barcode with the add-on code is then transmitted. If the required add-on code is not found, the EAN-13 barcode is discarded.

**Do Not Require Add-On Code:** If you have selected **Require Add-On Code**, and you want to disable this feature, scan **Do Not Require Add-On Code**. EAN-13 barcodes are handled, depending on your selection for the “Add-On Code Required” feature.



@E139780

**\*\* Do Not Require Add-On Code**



@E139781

**Require Add-On Code**

## EAN-13 Beginning with 979 Add-On Code Required

This setting programs the scanner to require an add-on code (2-digit or 5-digit) on EAN-13 barcodes that begin with “979”. The following settings can be programmed:

**Require Add-On Code:** All EAN-13 barcodes that begin with “979” must have a 2-digit or 5-digit add-on code. The EAN-13 barcode with the add-on code is then transmitted. If the required add-on code is not found, the EAN-13 barcode is discarded.

**Do Not Require Add-On Code:** If you have selected **Require Add-On Code**, and you want to disable this feature, scan **Do Not Require Add-On Code**. EAN-13 barcodes are handled, depending on your selection for the “Add-On Code Required” feature.



@E139790

**\*\* Do Not Require Add-On Code**



@E139791

**Require Add-On Code**

## **ISBN**

**Restore Factory Defaults**



@ISBDEF

**Restore the Factory Defaults of ISBN**

**Enable/Disable ISBN**



@ISBENA1

**Enable ISBN**



@ISBENA0

**\*\* Disable ISBN**

### **Set ISBN Format**



@ISBT101

**\*\* ISBN-10**



@ISBT100

**ISBN-13**

---

## ISSN

### Restore Factory Defaults



@ISSDEF

**Restore the Factory Defaults of ISSN**

### Enable/Disable ISSN



@ISSENA1

**Enable ISSN**



@ISSENA0

**\*\* Disable ISSN**

---

## Interleaved 2 of 5

### Restore Factory Defaults



@I25DEF

**Restore the Factory Defaults of Interleaved 2 of 5**

### Enable/Disable Interleaved 2 of 5



@I25ENA1

**\*\* Enable Interleaved 2 of 5**



@I25ENA0

**Disable Interleaved 2 of 5**



If the scanner fails to identify Interleaved 2 of 5 barcodes, you may first try this solution by scanning the **Enable Interleaved 2 of 5** barcode.

---

## Set Length Range for Interleaved 2 of 5

The scanner can be configured to only decode Interleaved 2 of 5 barcodes with lengths that fall between (inclusive) the minimum and maximum lengths. To accomplish it, you need to set the minimum and maximum lengths.



@I25MIN

### Set the Minimum Length (Default: 6)



@I25MAX

### Set the Maximum Length (Default: 80)



If minimum length is set to be greater than maximum length, the scanner only decodes Interleaved 2 of 5 barcodes with either the minimum or maximum length. If minimum length is same as maximum length, only Interleaved 2 of 5 barcodes with that length are to be decoded.

## Example

**Set the scanner to decode Interleaved 2 of 5 barcodes containing between 8 and 12 characters:**

1. Scan the **Set the Minimum Length** barcode.
2. Scan the numeric barcode "8" from the "Digit Barcodes" section in Appendix.
3. Scan the **Save** barcode from the "Save/Cancel Barcodes" section in Appendix.
4. Scan the **Set the Maximum Length** barcode.
5. Scan the numeric barcodes "1" and "2" from the "Digit Barcodes" section in Appendix.
6. Scan the **Save** barcode from the "Save/Cancel Barcodes" section in Appendix.

---

## Check Character Verification

A check character is optional for Interleaved 2 of 5 and can be added as the last character. It is a calculated value used to verify the integrity of the data.

- ✧ **Disable:** The scanner transmits Interleaved 2 of 5 barcodes as is.
- ✧ **Do Not Transmit Check Character After Verification:** The scanner checks the integrity of all Interleaved 2 of 5 barcodes to verify that the data complies with the check character algorithm. Barcodes passing the check will be transmitted except the last digit, whereas those failing it will not be transmitted.
- ✧ **Transmit Check Character After Verification:** The scanner checks the integrity of all Interleaved 2 of 5 barcodes to verify that the data complies with the check character algorithm. Barcodes passing the check will be transmitted, whereas those failing it will not be transmitted.

Since Interleaved 2 of 5 must always have an even number of digits, a zero may need to be added as the first digit when the check character is added. The check character is automatically generated when making Interleaved 2 of 5 barcodes.



@I25CHK0

**\*\* Disable**



@I25CHK1

**Do Not Transmit Check Character After Verification**



@I25CHK2

**Transmit Check Character After Verification**

If the **Do Not Transmit Check Character After Verification** option is enabled, Interleaved 2 of



---

5 barcodes with a length that is less than the configured minimum length after having the check character excluded will not be decoded. (For example, when the **Do Not Transmit Check Character After Verification** option is enabled and the minimum length is set to 4, Interleaved 2 of 5 barcodes with a total length of 4 characters including the check character cannot be read.)

## Matrix 2 of 5

### Restore Factory Defaults



@M25DEF

**Restore the Factory Defaults of Matrix 2 of 5**

### Enable/Disable Matrix 2 of 5



@M25ENA1

**\*\* Enable Matrix 2 of 5**



@M25ENA0

**Disable Matrix 2 of 5**



If the scanner fails to identify Matrix 2 of 5 barcodes, you may first try this solution by scanning the **Enable Matrix 2 of 5** barcode.



---

## Set Length Range for Matrix 2 of 5

The scanner can be configured to only decode Matrix 2 of 5 barcodes with lengths that fall between (inclusive) the minimum and maximum lengths. To accomplish it, you need to set the minimum and maximum lengths.



@M25MIN

### Set the Minimum Length (Default: 4)



@M25MAX

### Set the Maximum Length (Default: 80)



If minimum length is set to be greater than maximum length, the scanner only decodes Matrix 2 of 5 barcodes with either the minimum or maximum length. If minimum length is same as maximum length, only Matrix 2 of 5 barcodes with that length are to be decoded.



### Set the scanner to decode Matrix 2 of 5 barcodes containing between 8 and 12 characters:

1. Scan the **Set the Minimum Length** barcode.
2. Scan the numeric barcode "8" from the "Digit Barcodes" section in Appendix.
3. Scan the **Save** barcode from the "Save/Cancel Barcodes" section in Appendix.
4. Scan the **Set the Maximum Length** barcode.
5. Scan the numeric barcodes "1" and "2" from the "Digit Barcodes" section in Appendix.
6. Scan the **Save** barcode from the "Save/Cancel Barcodes" section in Appendix.

---

## Check Character Verification

A check character is optional for Matrix 2 of 5 and can be added as the last character. It is a calculated value used to verify the integrity of the data.

- ✧ **Disable:** The scanner transmits Matrix 2 of 5 barcodes as is.
- ✧ **Do Not Transmit Check Character After Verification:** The scanner checks the integrity of all Matrix 2 of 5 barcodes to verify that the data complies with the check character algorithm. Barcodes passing the check will be transmitted except the last digit, whereas those failing it will not be transmitted.
- ✧ **Transmit Check Character After Verification:** The scanner checks the integrity of all Matrix 2 of 5 barcodes to verify that the data complies with the check character algorithm. Barcodes passing the check will be transmitted, whereas those failing it will not be transmitted.

Since Matrix 2 of 5 must always have an even number of digits, a zero may need to be added as the first digit when the check character is added. The check character is automatically generated when making Matrix 2 of 5 barcodes.



@M25CHK0

**\*\* Disable**



@M25CHK1

**Do Not Transmit Check Character After  
Verification**



@M25CHK2

**Transmit Check Character After Verification**



If the **Do Not Transmit Check Character After Verification** option is enabled, Matrix 2 of 5 barcodes with a length that is less than the configured minimum length after having the check character excluded will not be decoded. (For example, when the **Do Not Transmit Check Character After Verification** option is enabled and the minimum length is set to 4, Matrix 2 of 5 barcodes with a total length of 4 characters including the check character cannot be read.)

---

## Industrial 25

### Restore Factory Defaults



@L25DEF

**Restore the Factory Defaults of Industrial 25**

### Enable/Disable Industrial 25



@L25ENA1

**Enable Industrial 25**



@L25ENA0

**\*\* Disable Industrial 25**



If the scanner fails to identify Industrial 25 barcodes, you may first try this solution by scanning the **Enable Industrial 25** barcode.

---

## Set Length Range for Industrial 25

The scanner can be configured to only decode Industrial 25 barcodes with lengths that fall between (inclusive) the minimum and maximum lengths. To accomplish it, you need to set the minimum and maximum lengths.



@L25MIN

### Set the Minimum Length (Default: 6)



@L25MAX

### Set the Maximum Length (Default: 48)



If minimum length is set to be greater than maximum length, the scanner only decodes Industrial 25 barcodes with either the minimum or maximum length. If minimum length is same as maximum length, only Industrial 25 barcodes with that length are to be decoded.

## Example

### Set the scanner to decode Industrial 25 barcodes containing between 8 and 12 characters:

1. Scan the **Set the Minimum Length** barcode.
2. Scan the numeric barcode "8" from the "Digit Barcodes" section in Appendix.
3. Scan the **Save** barcode from the "Save/Cancel Barcodes" section in Appendix.
4. Scan the **Set the Maximum Length** barcode.
5. Scan the numeric barcodes "1" and "2" from the "Digit Barcodes" section in Appendix.
6. Scan the **Save** barcode from the "Save/Cancel Barcodes" section in Appendix.

---

## Check Character Verification

A check character is optional for Industrial 25 and can be added as the last character. It is a calculated value used to verify the integrity of the data.

- ◇ **Disable:** The scanner transmits Industrial 25 barcodes as is.
- ◇ **Do Not Transmit Check Character After Verification:** The scanner checks the integrity of all Industrial 25 barcodes to verify that the data complies with the check character algorithm. Barcodes passing the check will be transmitted except the last digit, whereas those failing it will not be transmitted.
- ◇ **Transmit Check Character After Verification:** The scanner checks the integrity of all Industrial 25 barcodes to verify that the data complies with the check character algorithm. Barcodes passing the check will be transmitted, whereas those failing it will not be transmitted.



@L25CHK0

**\*\* Disable**



@L25CHK1

**Do Not Transmit Check Character After  
Verification**



@L25CHK2

**Transmit Check Character After Verification**



If the **Do Not Transmit Check Character After Verification** option is enabled, Industrial 25 barcodes with a length that is less than the configured minimum length after having the check character excluded will not be decoded. (For example, when the **Do Not Transmit**

---

**Check Character After Verification** option is enabled and the minimum length is set to 4, Industrial 25 barcodes with a total length of 4 characters including the check character cannot be read.)

---

## ITF-14

ITF-14 is a special kind of Interleaved 2 of 5 with a length of 14 characters and the last character as the check character.

ITF-14 priority principle: For the Interleaved 2 of 5 barcodes with a length of 14 characters and the last character as the check character, the ITF-14 configurations shall take precedence over the Interleaved 2 of 5 settings.

### Restore Factory Defaults



@I14DEF

**Restore the Factory Defaults of ITF-14**

### Enable/Disable ITF-14



@I14ENA0

**\*\* Disable ITF-14**



@I14ENA1

**Enable ITF-14 But Do Not Transmit Check Character**





@i14ENA2

### **Enable ITF-14 and Transmit Check Character**



An example of the ITF-14 priority principle: when ITF-14 is enabled and Interleaved 2 of 5 is disabled, the scanner only decodes Interleaved 2 of 5 barcodes with a length of 14 characters and the last character as the check character.

---

## ITF-6

ITF-6 is a special kind of Interleaved 2 of 5 with a length of 6 characters and the last character as the check character.

ITF-6 priority principle: For the Interleaved 2 of 5 barcodes with a length of 6 characters and the last character as the check character, the ITF-6 configurations shall take precedence over the Interleaved 2 of 5 settings.

### Restore Factory Defaults



@IT6DEF

**Restore the Factory Defaults of ITF-6**

### Enable/Disable ITF-6



@IT6ENAO

**\*\* Disable ITF-6**



@IT6ENA1

**Enable ITF-6 But Do Not Transmit Check Character**



@IT6ENA2

### **Enable ITF-6 and Transmit Check Character**



An example of the ITF-6 priority principle: when ITF-6 is enabled and Interleaved 2 of 5 is disabled, the scanner only decodes Interleaved 2 of 5 barcodes with a length of 6 characters and the last character as the check character.

---

## Standard 25

### Restore Factory Defaults



@S25DEF

**Restore the Factory Defaults of Standard 25**

### Enable/Disable Standard 25



@S25ENA1

**Enable Standard 25**



@S25ENA0

**\*\* Disable Standard 25**



If the scanner fails to identify Standard 25 barcodes, you may first try this solution by scanning the **Enable Standard 25** barcode.

---

## Set Length Range for Standard 25

The scanner can be configured to only decode Standard 25 barcodes with lengths that fall between (inclusive) the minimum and maximum lengths. To accomplish it, you need to set the minimum and maximum lengths.



@S25MIN

### Set the Minimum Length (Default: 6)



@S25MAX

### Set the Maximum Length (Default: 48)



If minimum length is set to be greater than maximum length, the scanner only decodes Standard 25 barcodes with either the minimum or maximum length. If minimum length is same as maximum length, only Standard 25 barcodes with that length are to be decoded.



### Set the scanner to decode Standard 25 barcodes containing between 8 and 12 characters:

1. Scan the **Set the Minimum Length** barcode.
2. Scan the numeric barcode "8" from the "Digit Barcodes" section in Appendix.
3. Scan the **Save** barcode from the "Save/Cancel Barcodes" section in Appendix.
4. Scan the **Set the Maximum Length** barcode.
5. Scan the numeric barcodes "1" and "2" from the "Digit Barcodes" section in Appendix.
6. Scan the **Save** barcode from the "Save/Cancel Barcodes" section in Appendix.

---

## Check Character Verification

A check character is optional for Standard 25 and can be added as the last character. It is a calculated value used to verify the integrity of the data.

- ✧ **Disable:** The scanner transmits Standard 25 barcodes as is.
- ✧ **Do Not Transmit Check Character After Verification:** The scanner checks the integrity of all Standard 25 barcodes to verify that the data complies with the check character algorithm. Barcodes passing the check will be transmitted except the last digit, whereas those failing it will not be transmitted.
- ✧ **Transmit Check Character After Verification:** The scanner checks the integrity of all Standard 25 barcodes to verify that the data complies with the check character algorithm. Barcodes passing the check will be transmitted, whereas those failing it will not be transmitted.



@S25CHK0

**\*\* Disable**



@S25CHK1

**Do Not Transmit Check Character After  
Verification**



@S25CHK2

**Transmit Check Character After  
Verification**



If the **Do Not Transmit Check Character After Verification** option is enabled, Standard 25 barcodes with a length that is less than the configured minimum length after having the

---

check character excluded will not be decoded. (For example, when the **Do Not Transmit Check Character After Verification** option is enabled and the minimum length is set to 4, Standard 25 barcodes with a total length of 4 characters including the check character cannot be read.)

---

## COOP 25

### Restore Factory Defaults



@COPDEF

**Restore the Factory Defaults of COOP 25**

### Enable/Disable COOP 25



@COPENA1

**\*\*Enable COOP 25**



@COPENA0

**Disable COOP 25**



---

## Set Length Range for COOP 25

The scanner can be configured to only decode COOP 25 barcodes with lengths that fall between (inclusive) the minimum and maximum lengths. To accomplish it, you need to set the minimum and maximum lengths.



@COPMIN

### Set the Minimum Length (Default: 1)



@PLYMAX

### Set the Maximum Length (Default: 48)



If minimum length is set to be greater than maximum length, the scanner only decodes COOP 25 barcodes with either the minimum or maximum length. If minimum length is same as maximum length, only COOP 25 barcodes with that length are to be decoded.

## **E***xample*

### Set the scanner to decode COOP 25 barcodes containing between 8 and 12 characters:

1. Scan the **Set the Minimum Length** barcode.
2. Scan the numeric barcode "8" from the "Digit Barcodes" section in Appendix.
3. Scan the **Save** barcode from the "Save/Cancel Barcodes" section in Appendix.
4. Scan the **Set the Maximum Length** barcode.
5. Scan the numeric barcodes "1" and "2" from the "Digit Barcodes" section in Appendix.
6. Scan the **Save** barcode from the "Save/Cancel Barcodes" section in Appendix.

---

## Check Character Verification

A check character is optional for COOP 25 and can be added as the last character. It is a calculated value used to verify the integrity of the data.

- ✧ **Disable:** The scanner transmits COOP 25 barcodes as is.
- ✧ **Enable But Do Not Transmit Check Character:** The scanner checks the integrity of all COOP 25 barcodes to verify that the data complies with the check character algorithm. Barcodes passing the check will be transmitted except the last digit, whereas those failing it will not be transmitted.
- ✧ **Enable And Transmit Check Character:** The scanner checks the integrity of all COOP 25 barcodes to verify that the data complies with the check character algorithm. Barcodes passing the check will be transmitted, whereas those failing it will not be transmitted.



@COPCHK0

**\*\* Disable**



@COPCHK1

**Enable But Do Not Transmit Check Character**



@COPCHK2

**Transmit Check Character After  
Verification**

---

## Deutsche 14

### Restore Factory Defaults



@D14DEF

**Restore the Factory Defaults of Deutsche 14**

### Enable/Disable Deutsche 14



@D14ENA1

**Enable Deutsche 14 But Do Not Transmit  
Check Digit**



@D14ENA2

**Enable Deutsche 14 and Transmit Check  
Digit**



@D14ENA0

**\*\*Disable**

---

## Deutsche 12

### Restore Factory Defaults



@D12DEF

**Restore the Factory Defaults of Deutsche 12**

### Enable/Disable Deutsche 12



@D12ENA1

**Enable Deutsche 12 But Do Not Transmit  
Check Digit**



@D12ENA2

**Enable Deutsche 12 and Transmit Check  
Digit**



@D12ENA0

**\*\*Disable**

---

## Plessey

### Restore Factory Defaults



@PLYDEF

**Restore the Factory Defaults of Plessey**

### Enable/Disable Plessey



@PLYENA1

**Enable Plessey**



@PLYENA0

**\*\* Disable Plessey**



If the scanner fails to identify Plessey barcodes, you may first try this solution by scanning the **Enable Plessey** barcode.

---

## Set Length Range for Plessey

The scanner can be configured to only decode Plessey barcodes with lengths that fall between (inclusive) the minimum and maximum lengths. To accomplish it, you need to set the minimum and maximum lengths.



@PLYMIN

### Set the Minimum Length (Default: 4)



@PLYMAX

### Set the Maximum Length (Default: 48)



If minimum length is set to be greater than maximum length, the scanner only decodes Plessey barcodes with either the minimum or maximum length. If minimum length is same as maximum length, only Plessey barcodes with that length are to be decoded.

## Example

### Set the scanner to decode Plessey barcodes containing between 8 and 12 characters:

1. Scan the **Set the Minimum Length** barcode.
2. Scan the numeric barcode "8" from the "Digit Barcodes" section in Appendix.
3. Scan the **Save** barcode from the "Save/Cancel Barcodes" section in Appendix.
4. Scan the **Set the Maximum Length** barcode.
5. Scan the numeric barcodes "1" and "2" from the "Digit Barcodes" section in Appendix.
6. Scan the **Save** barcode from the "Save/Cancel Barcodes" section in Appendix.

---

## Check Character Verification

Check characters are optional for Plessey and can be added as the last two characters, which are calculated values used to verify the integrity of the data.

- ✧ **Disable:** The scanner transmits Plessey barcodes as is.
- ✧ **Do Not Transmit Check Character After Verification:** The scanner checks the integrity of all Plessey barcodes to verify that the data complies with the check character algorithm. Barcodes passing the checks will be transmitted except the last two digits, whereas those failing them will not be transmitted.
- ✧ **Transmit Check Character After Verification:** The scanner checks the integrity of all Plessey barcodes to verify that the data complies with the check character algorithm. Barcodes passing the checks will be transmitted, whereas those failing them will not be transmitted.



@PLYCHK0

**\*\* Disable**



@PLYCHK1

**Do Not Transmit Check Character After Verification**



@PLYCHK2

**Transmit Check Character After Verification**



If the **Do Not Transmit Check Character After Verification** option is enabled, Plessey barcodes with a length that is less than the configured minimum length after having the check characters excluded will not be decoded. (For example, when the **Do Not Transmit Check Character After Verification** option is enabled and the minimum length is set to 4,

---

Plessey barcodes with a total length of 4 characters including the check characters cannot be read.)

## MSI-Plessey

### Restore Factory Defaults



@MSIDF

**Restore the Factory Defaults of MSI-Plessey**

### Enable/Disable MSI-Plessey



@MSIENAI

**Enable MSI-Plessey**



@MSIENAO

**\*\* Disable MSI-Plessey**



If the scanner fails to identify MSI-Plessey barcodes, you may first try this solution by scanning the **Enable MSI-Plessey** barcode.



---

## Set Length Range for MSI-Plessey

The scanner can be configured to only decode MSI-Plessey barcodes with lengths that fall between (inclusive) the minimum and maximum lengths. To accomplish it, you need to set the minimum and maximum lengths.



@MSIMIN

### Set the Minimum Length (Default: 4)



@MSIMAX

### Set the Maximum Length (Default: 48)



If minimum length is set to be greater than maximum length, the scanner only decodes MSI-Plessey barcodes with either the minimum or maximum length. If minimum length is same as maximum length, only MSI-Plessey barcodes with that length are to be decoded.

## Example

### Set the scanner to decode MSI-Plessey barcodes containing between 8 and 12 characters:

1. Scan the **Set the Minimum Length** barcode.
2. Scan the numeric barcode "8" from the "Digit Barcodes" section in Appendix.
3. Scan the **Save** barcode from the "Save/Cancel Barcodes" section in Appendix.
4. Scan the **Set the Maximum Length** barcode.
5. Scan the numeric barcodes "1" and "2" from the "Digit Barcodes" section in Appendix.
6. Scan the **Save** barcode from the "Save/Cancel Barcodes" section in Appendix.

---

## Check Character Verification

Check characters are optional for MSI-Plessey and can be added as the last one or two characters, which are calculated values used to verify the integrity of the data.

If the **Disable** option is enabled, the scanner transmits MSI-Plessey barcodes as is.



@MSICLK0

**Disable**



@MSICLK1

**\*\* One Check Character, MOD10**



@MSICLK2

**Two Check Characters, MOD10/MOD10**



@MSICLK3

**Two Check Characters, MOD10/MOD11**

---

## Transmit Check Character



@MSITCK1

### \*\* Transmit MSI-Plessey Check Character



@MSITCK0

### Do Not Transmit MSI-Plessey Check Character



If you select a check character algorithm and the **Do Not Transmit Check Character** option, MSI-Plessey barcodes with a length that is less than the configured minimum length after having the check character(s) excluded will not be decoded. (For example, when the One Check Character, **MOD10** and **Do Not Transmit Check Character** options are enabled and the minimum length is set to 4, MSI-Plessey barcodes with a total length of 4 characters including the check character cannot be read.)

---

---

## QR Code

### Restore Factory Defaults



@QRCDEF

**Restore the Factory Defaults of QR Code**

### Enable/Disable QR Code



@QRCENAI

**\*\* Enable QR Code**



@QRCENA0

**Disable QR Code**



If the scanner fails to identify QR Code barcodes, you may first try this solution by scanning the **Enable QR Code** barcode.

---

## Set Length Range for QR Code

The scanner can be configured to only decode QR Code barcodes with lengths that fall between (inclusive) the minimum and maximum lengths. To accomplish it, you need to set the minimum and maximum lengths.



@QRCMIN

### Set the Minimum Length (Default: 1)



@QRCMAX

### Set the Maximum Length (Default: 7089)



Minimum length is not allowed to be greater than maximum length. If you only want to read QR Code barcodes with a specific length, set both minimum and maximum lengths to be that desired length.

## Example

### Set the scanner to decode QR Code barcodes containing between 8 and 12 characters:

1. Scan the **Set the Minimum Length** barcode.
2. Scan the numeric barcode "8" from the "Digit Barcodes" section in Appendix.
3. Scan the **Save** barcode from the "Save/Cancel Barcodes" section in Appendix.
4. Scan the **Set the Maximum Length** barcode.
5. Scan the numeric barcodes "1" and "2" from the "Digit Barcodes" section in Appendix.
6. Scan the **Save** barcode from the "Save/Cancel Barcodes" section in Appendix.

---

## QR Inverse

Regular barcode: Dark bars on a bright background.

Inverse barcode: Bright bars on a dark background.



@QRCINV0

**Decode Regular QR Barcodes Only**



@QRCINV2

**\*\* Decode Both**

## Character Encoding



@QRCENC0

**\*\* Default Character Encoding**



@QRCENC1

**UTF-8**

---

## QR ECI Output



@QRCEC10

**Disable QR ECI Output**



@QRCEC11

**\*\* Enable QR ECI Output**

## Continuous Code



@QRCMF11

**\*\*On**



@QRCMF10

**Off**

## Dot-peen Code



@QRCDFE1

**\*\*On**



@QRCDFE0

**Off**

### Mirror Code

For QR, when you have enabled Image Mirror, processes reverse printed or marked codes (mirrored images).



@QRCMRE0

**Off**



@QRCMRE1

**\*\*On**

### QR Model 1

You can set disable and enable QR model 1 through the following setting code.



@QRCMIE0

**Off**





@QRCME1

**\*\*On**

## QR Model 2

Model 2 of QR code is an improved version of model 1, which can also read data smoothly when the QR code is deformed. You can set disable and enable QR model 2 through the following setting code.



@QRCM2E0

**\*\*On**



@QRCM2E1

**Off**

## Micro QR



@MQRENA0

**Disable Micro QR Code**



@MQRENAI

**\*\* Enable Micro QR Code**

## **Data Matrix**

### **Restore Factory Defaults**



@DMCDEF

**Restore the Factory Defaults of Data Matrix**

### **Enable/Disable Data Matrix**



@DMCENAI

**\*\* Enable Data Matrix**



@DMCENAO

**Disable Data Matrix**

### **Set Length Range for Data Matrix**

The scanner can be configured to only decode Data Matrix barcodes with lengths that fall between (inclusive) the minimum and maximum lengths. To accomplish it, you need to set the minimum and maximum lengths.



@DMCMIN

**Set the Minimum Length (Default: 1)**



@DMCMAX

**Set the Maximum Length (Default: 3116)**



Minimum length is not allowed to be greater than maximum length. If you only want to read Data Matrix barcodes with a specific length, set both minimum and maximum lengths to be that desired length.

---

## Example

**Set the scanner to decode Data Matrix barcodes containing between 8 and 12 characters:**

1. Scan the **Set the Minimum Length** barcode.
2. Scan the numeric barcode "8" from the "Digit Barcodes" section in Appendix.
3. Scan the **Save** barcode from the "Save/Cancel Barcodes" section in Appendix.
4. Scan the **Set the Maximum Length** barcode.
5. Scan the numeric barcodes "1" and "2" from the "Digit Barcodes" section in Appendix.
6. Scan the **Save** barcode from the "Save/Cancel Barcodes" section in Appendix.

### Rectangular Barcode

Data Matrix has two formats:

Square barcodes having the same amount of modules in length and width: 10\*10, 12\*12... 144\*144.

Rectangular barcodes having different amounts of models in length and width: 6\*16, 6\*14...14\*22.



@DMCRECI

**\*\* Enable Rectangular Barcode**



@DMCRECO

**Disable Rectangular Barcode**

### Data Matrix Inverse

Regular barcode: Dark bars on a bright background.

Inverse barcode: Bright bars on a dark background.



@DMCINV0

**Decode Regular Data Matrix Barcodes Only**



@DMCINV2

**\*\* Decode Both**

---

## Character Encoding



@DMCENC0

**\*\* Default Character Encoding**



@DMCENC1

**UTF-8**

## Data Matrix ECI Output



@DMCEC10

**Disable Data Matrix ECI Output**



@DMCEC11

**\*\* Enable Data Matrix ECI Output**

---

**ECC200**



@DMCE2E0

**Off**



@DMCE2E1

**\*\* On**

**ECC0T0140**



@DMCE0E0

**Off**



@DMCE0E1

**\*\* On**

---

---

## Continuous Code



@DMCMFEI

**\*\*On**



@DMCMFE0

**Off**

## Dot-peen Code



@DMCDFEI

**On**



@DMCDFE0

**\*\*off**



---

## Mirror Code

For Data Matrix, when you have enabled Image Mirror, processes reverse printed or marked codes (mirrored images).



@DMCMRE0

**Off**



@DMCMRE1

**\*\*On**

---

---

## PDF417

### Restore Factory Defaults



@PDFDEF

**Restore the Factory Defaults of PDF417**

### Enable/Disable PDF417



@PDFENA1

**\*\* Enable PDF417**



@PDFENAO

**Disable PDF417**



If the scanner fails to identify PDF417 barcodes, you may first try this solution by scanning the **Enter Setup** barcode and then **Enable PDF417** barcode.

---

## Set Length Range for PDF417

The scanner can be configured to only decode PDF417 barcodes with lengths that fall between (inclusive) the minimum and maximum lengths. To accomplish it, you need to set the minimum and maximum lengths.



@PDFMIN

### Set the Minimum Length (Default: 1)



@PDFMAX

### Set the Maximum Length (Default: 2710)



Minimum length is not allowed to be greater than maximum length. If you only want to read PDF417 barcodes with a specific length, set both minimum and maximum lengths to be that desired length.



### Set the scanner to decode PDF417 barcodes containing between 8 and 12 characters:

1. Scan the **Set the Minimum Length** barcode.
2. Scan the numeric barcode "8" from the "Digit Barcodes" section in Appendix.
3. Scan the **Save** barcode from the "Save/Cancel Barcodes" section in Appendix.
4. Scan the **Set the Maximum Length** barcode.
5. Scan the numeric barcodes "1" and "2" from the "Digit Barcodes" section in Appendix.
6. Scan the **Save** barcode from the "Save/Cancel Barcodes" section in Appendix.

---

## PDF417 Inverse

Regular barcode: Dark bars on a bright background.

Inverse barcode: Bright bars on a dark background.



@PDFINV0

**Decode Regular PDF417 Barcodes Only**



@PDFINV1

**Decode Inverse PDF417 Barcodes Only**



@PDFINV2

**\*\*Decode Both**

## Character Encoding



@PDFENCO

**\*\* Default Character Encoding**



@PDFENC1

**UTF-8**

---

## Chapter 8 Prefix & Suffix

### Introduction

A 1D barcode could contain digits, letters, symbols, etc. A 2D barcode could contain more data, such as Chinese characters and other multi-byte characters. However, in real applications, they do not and should not have all information we need, such as barcode type, data acquisition time and delimiter, in order to keep the barcodes short and flexible.

Prefix and suffix are how to fulfill the needs mentioned above. They can be added, removed and modified while the original barcode data remains intact.



Barcode processing procedure:

1. Edit data with Data Formatter
2. Append prefix/suffix
3. Pack data
4. Append terminating character

---

## Global Settings

### Enable/Disable All Prefixes/Suffixes

**Disable All Prefixes/Suffixes:** Transmit barcode data with no prefix/suffix.

**Enable All Prefixes/Suffixes:** Allow to append Code ID prefix, AIM ID prefix, custom prefix/suffix and terminating character to the barcode data before the transmission.



@APSENA0

**Disable All Prefixes/Suffixes**



@APSENA1

**Enable All Prefixes/Suffixes**

## Prefix Sequence



@PRESEQ0

**\*\* Code ID+ Custom +AIM ID**





@PRESEQ1

**Custom + Code ID + AIM ID**

---

## Custom Prefix

### Enable/Disable Custom Prefix

If custom prefix is enabled, you are allowed to append to the data a user-defined prefix that cannot exceed 10 characters. For example, if the custom prefix is “AB” and the barcode data is “123”, the Host will receive “AB123”.



@CPRENA0

**\*\* Disable Custom Prefix**



@CPRENA1

**Enable Custom Prefix**

### Set Custom Prefix

To set a custom prefix, scan the **Set Custom Prefix** barcode then the numeric barcodes corresponding to the hexadecimal value of a desired prefix then the **Save** barcode.

**Note:** A custom prefix cannot exceed 10 characters.



@CPRSET

**Set Custom Prefix**

**E**  
*sample*

**Set the custom prefix to “CODE” (HEX: 0x43/0x4F/0x44/0x45):**

1. Scan the **Set Custom Prefix** barcode.

2. Scan the numeric barcodes "4", "3", "4", "F", "4", "4", "4" and "5" from the "Digit Barcodes" section in Appendix.
3. Scan the **Save** barcode from the "Save/Cancel Barcodes" section in Appendix.
4. Scan the **Enable Custom Prefix** barcode.

## AIM ID Prefix

AIM (Automatic Identification Manufacturers) ID defines symbology identifier (For the details, see the "AIM ID Table" section in Appendix). If AIM ID prefix is enabled, the scanner will add the symbology identifier before the scanned data after decoding.



@AIDENAO

**\*\* Disable AIM ID Prefix**



@AIDENA1

**Enable AIM ID Prefix**



AIM ID is not user programmable.

---

## Code ID Prefix

Code ID can also be used to identify barcode type. Unlike AIM ID, Code ID is user programmable. Code ID can only consist of one or two English letters.



@CIDENA0

**\*\* Disable Code ID Prefix**



@CIDENA1

**Enable Code ID Prefix**

## Restore All Default Code IDs

For the information of default Code IDs, see the “Code ID Table” section in Appendix.



@CIDDEF

**Restore All Default Code IDs**

---

## Modify Code ID

See the examples below to learn how to modify a Code ID and restore the default Code IDs of all symbologies.

### **E** *sample*

#### **Modify PDF417 Code ID to be "p" (HEX: 0x70):**

1. Scan the **Modify PDF417 Code ID** barcode.
2. Scan the numeric barcodes "7" and "0" from the "Digit Barcodes" section in Appendix.
3. Scan the **Save** barcode from the "Save/Cancel Barcodes" section in Appendix.

#### **Restore the default Code IDs of all symbologies:**

1. Scan the **Restore All Default Code IDs** barcode.

---

**ID symbologies:**



@CID002

**Modify Code 128 Code ID**



@CID003

**Modify GS1-128 Code ID**



@CID004

**Modify EAN-8 Code ID**



@CID005

**Modify EAN-13 Code ID**



@CID006

**Modify UPC-E Code ID**



@CID007

**Modify UPC-A Code ID**



@CID008

**Modify Interleaved 2 of 5 Code ID**



@CID009

**Modify ITF-14 Code ID**



@CID010

**Modify ITF-6 Code ID**



@CID011

**Modify Matrix 2 of 5 Code ID**



@CID013

**Modify Code 39 Code ID**



@CID015

**Modify Codabar Code ID**



@CID017

**Modify Code 93 Code ID**



@CID020

**Modify AIM 128 Code ID**



@CID021

**Modify ISBT 128 Code ID**



@CID022

**Modify COOP 25 Code ID**



@CID023

**Modify ISSN Code ID**





@CID024

**Modify ISBN Code ID**



@CID025

**Modify Industrial 25 Code ID**



@CID026

**Modify Standard 25 Code ID**



@CID027

**Modify Plessey Code ID**



@CID028

**Modify Code 11 Code ID**



@CID029

**Modify MSI-Plessey Code ID**



@CID129

**Modify Deutsche 12 Code ID**



@CID128

**Modify Deutsche 14 Code ID**

---

**2D symbologies:**



@CID032

**Modify PDF417 Code ID**



@CID033

**Modify QR Code ID**



@CID035

**Modify Data Matrix Code ID**



@CID043

**Modify Micro QR Code ID**

---

## Custom Suffix

### Enable/Disable Custom Suffix

If custom suffix is enabled, you are allowed to append to the data a user-defined suffix that cannot exceed 10 characters. For example, if the custom suffix is "AB" and the barcode data is "123", the Host will receive "123AB".



@CSUENAO

**\*\* Disable Custom Suffix**



@CSUENA1

**Enable Custom Suffix**

### Set Custom Suffix

To set a custom suffix, scan the **Set Custom Suffix** barcode then the numeric barcodes corresponding to the hexadecimal value of a desired suffix then the **Save** barcode.

**Note:** A custom suffix cannot exceed 10 characters.



@CSUSET

**Set Custom Suffix**

**E**  
*xample*

Set the custom suffix to "CODE" (HEX: 0x43/0x4F/0x44/0x45):

1. Scan the **Set Custom Suffix** barcode.
2. Scan the numeric barcodes "4", "3", "4", "F", "4", "4", "4" and "5" from the "Digit Barcodes" section in Appendix.
3. Scan the **Save** barcode from the "Save/Cancel Barcodes" section in Appendix.
4. Scan the **Enable Custom Suffix** barcode.

## Terminating Character Suffix

### Enable/Disable Terminating Character Suffix

A terminating character such as carriage return (CR) or carriage return/line feed pair (CRLF) can only be used to mark the end of data, which means nothing can be added after it.



@TSUENAO

#### Disable Terminating Character Suffix



@TSUENAI

#### \*\* Enable Terminating Character Suffix

### Set Terminating Character Suffix

To set a terminating character suffix, scan the **Set Terminating Character Suffix** barcode then the numeric barcodes corresponding to the hexadecimal value of a desired terminating character then the **Save** barcode.

**Note:** A terminating character suffix cannot exceed 2 characters.



@TSUSET

**Set Terminating Character Suffix**



@TSUSET0D

**\*\* Set Terminating Character to CR  
(0x0D)**



@TSUSET0D0A

**Set Terminating Character to CRLF  
(0x0D,0x0A)**

**Set the terminating character suffix to 0x0A:**

1. Scan the **Set Terminating Character Suffix** barcode.
2. Scan the numeric barcodes "0" and "A" from the "Digit Barcodes" section in Appendix.
3. Scan the **Save** barcode from the "Save/Cancel Barcodes" section in Appendix.
4. Scan the **Enable Terminating Character Suffix** barcode.

# Chapter 9 Batch Programming

## Introduction

Batch programming enables users to integrate a batch of commands into a single batch barcode.

Listed below are batch programming rules:

1. Command format: Command + Parameter Value.
2. Each command is terminated by a semicolon (;). Note that there is no space between a command and its terminator semicolon.
3. Use the barcode generator software to generate a 2D batch barcode.

Example: Create a batch barcode for **Illumination On, Sense Mode, Decode Session Timeout = 2s**:

1. Input the commands:

```
@ILLSCNI;SCNMOD2;ORTSET2000;
```

2. Generate a batch barcode.

When setting up a scanner with the above configuration, scan the **Enable Batch Barcode** barcode and then the batch barcode generated.



@BATCHS

**Enable Batch Barcode**

---

## Create a Batch Command

A batch command can contain many individual commands. Each individual command is separated by a semicolon.

Command structure: command (+ setting information).

There are three types of setting commands.

### 1. Setup syntax 1: Command

The most commands in this form are the setting commands that can be completed at one time without using data codes.

E.g:

The command to set the baud rate to 38400 is @ 232BAD6

The command to set automatic code reading is @ SCNMOD2

### 2. Setting syntax 2: Command + number

This form of command is used to set the values of some parameters, including: maximum and minimum length of barcode reading, timeout setting of one reading, delay setting of same reading, sensitivity setting, etc.

E.g:

The command to set the delay time of one code reading to 3000 milliseconds is: @ ORTSET3000

The command to set the decoded sound duration to 100 milliseconds is: @ GRBDUR100

### 3. Setup syntax 3: Command + Hexadecimal

This form of command can be used to set custom prefix, custom suffix, terminator suffix, CodeID, etc.

Note: Every two hexadecimal characters in the command represent a character to be set.

E.g:



---

The command to set the custom prefix to "J" is: @ CPRSET4A

The command to set the CodeID of Code128 to "j" is: @ CID0026A

## Create a Batch Barcode

Batch barcodes can be produced in the format of PDF417, QR Code or Data Matrix. It is recommended to use a two-dimensional barcode.

Example: Create a batch barcode for **Illumination On, Sense Mode, Decode Session Timeout = 2s, and the reading of Interleaved 2 of 5 barcodes is prohibited;**

1. Input the following commands:

```
@ILLSCN1;SCNMOD2;ORTSET2000; I25ENA0;
```

2. Generate a Data Matrix batch barcode as follows.



---

---

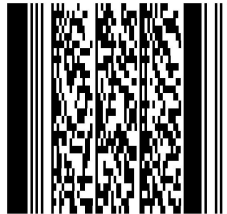
## Use Batch Barcode

To put a batch barcode into use, scan the following barcodes. (Use the example above.)



@BATCHS

**Enable Batch Barcode**



**Batch Barcode**

# Appendix

## Digit Barcodes

0~9



@DIGIT0

0



@DIGIT1

1



@DIGIT2

2



@DIGIT3

3



@DIGIT4

4



@DIGIT6

**6**



@DIGIT8

**8**



@DIGIT5

**5**



@DIGIT7

**7**



@DIGIT9

**9**

---

**A~F**



@DIGITA

**A**



@DIGITB

**B**



@DIGITC

**C**



@DIGITD

**D**



@DIGITE

**E**



@DIGITF

**F**

---

## Save/Cancel Barcodes

After reading numeric barcode(s), you need to scan the **Save** barcode to save the data. If you scan the wrong digit(s), you can either scan the **Cancel** barcode and then start the configuration all over again, or scan the **Delete the Last Digit** barcode and then the correct digit, or scan the **Delete All Digits** barcode and then the digits you want.

For instance, after reading the **Maximum Length** barcode and numeric barcodes "1", "2" and "3", you scan:

- ✧ **Delete the Last Digit:** The last digit "3" will be removed.
- ✧ **Delete All Digits:** All digits "123" will be removed.
- ✧ **Cancel:** The maximum length configuration will be cancelled. And the scanner is still in the setup mode.



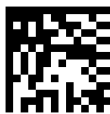
@DIGSAV

**Save**



@DIGCAN

**Cancel**



@DIGDEL

**Delete the Last Digit**



@DIGDAL

**Delete All Digits**

## Factory Defaults Table

Parameter	Factory Default	Remark
<b>System Settings</b>		
Barcode Programming	Disabled (Exit Setup)	
Programming Barcode Data	Do not transmit	
Illumination	On	
Illumination Brightness	Normal	
Illumination Color	Red LED and White LED	
Interval Time of Illumination switching	2000ms	
Aiming	Normal	
Good Read LED	On	
Good Read LED Duration	Short (20ms)	
Power On Beep	On	
Good Read Beep	On	
Good Read Beep Duration	Medium (80ms)	
Good Read Beep Frequency	Medium (2730Hz)	
Good Read Beep Volume	Loud	
Number of Good Read Beeps	1	
Good Read Beep Interval Time	Short	
Good Read Vibration	Off	
Good Read Vibration Duration	300ms	
Default Scan Mode	Level Mode	
Decode Session Timeout	3,000ms	1-3,600,000ms; 0: infinite.
Timeout between Decodes	500ms	1-10,000ms
Reread Timeout	Enabled, 15,000ms	1-3,600,000ms
Good Read Delay	Disabled, 500ms	1-3,600,000ms
Image Decoding Timeout	350ms	1-3,000ms
Sensitivity	Level 1	Level 1-20
Scanning Preference	Normal Mode	
Read Barcode	On	
Decode Area	Priori On Aimed Barcode	
Specify Decoding Area	40% top, 60% bottom, 40% left, 60% right	
Image Resize	Original Image	
Image Flipping	Do Not Flip	

Smart Stand Mode	On	
Default Interface	USB HID Keyboard	
<b>RS-232 Interface</b>		
Baud Rate	115200	
Parity Check	None	
Data Bits	8	
Stop Bits	1	
Hardware Auto Flow Control	Disabled	
<b>USB Interface</b>		
USB Country Keyboard	US keyboard	USB HID Keyboard
Beep on Unknown Character	Off	USB HID Keyboard
Emulate ALT+Keypad	Off	USB HID Keyboard
Code Page	Code Page 1252 (West European Latin)	USB HID Keyboard
Unicode Encoding	Off	USB HID Keyboard
Function Key Mapping	Disable	USB HID Keyboard
Inter-Keystroke Delay	No Delay	USB HID Keyboard
Convert Case	No Case Conversion	USB HID Keyboard
Emulate Numeric Keypad 1	Disabled	USB HID Keyboard
Emulate Numeric Keypad 2	Disabled	USB HID Keyboard
Polling Rate	4ms	USB HID Keyboard
Leading Zero	On	
<b>External Keyboard Setting</b>		
External Keyboard Connected	On	
<b>Wireless Communication</b>		
Batch Mode Option	Off	
Prevent Same Barcode Storage	Off	
Batch Mode Transmit Delay	No Transmit Delay (0ms)	
Auto Clear Stored Data after Transmission	Off	
Radio Communication Modes	Point-to-Point Mode	
Retransmission	Off	
Wireless Scanner Sleep Timeout	15s	
Wireless Scanner Shutdown Timeout	30min	
When The Wireless Scanner Is Placed On The Cradle	Disable Reading Barcode	
<b>Symbologies</b>		
<b>Global Settings</b>		
Image Brightness Adaptation 1	15	



Image Brightness Adaptation 2	10	
1D Decoding Complexity	Medium	
1D Inverse	Regular and Inverse	
<b>Code 128</b>		
Code 128	Enabled	
Maximum Length	48	
Minimum Length	1	
<b>EAN-8</b>		
EAN-8	Enabled	
Check Character	Transmit	
2-Digit Add-On Code	Disabled	
5-Digit Add-On Code	Disabled	
Add-On Code	Not Required	
Add-On Code Separator	Off	
Convert EAN-8 to EAN-13	Disabled	
<b>EAN-13</b>		
EAN-13	Enabled	
Check Character	Transmit	
2-Digit Add-On Code	Disabled	
5-Digit Add-On Code	Disabled	
Add-On Code	Not required	
Add-On Code Separator	Off	
EAN-13 Beginning with 290 Add-On Code Required	Do Not Require Add-On Code	
EAN-13 Beginning with 378/379 Add-On Code Required	Do Not Require Add-On Code	
EAN-13 Beginning with 414/419 Add-On Code Required	Do Not Require Add-On Code	
EAN-13 Beginning with 434/439 Add-On Code Required	Do Not Require Add-On Code	
EAN-13 Beginning with 977 Add-On Code Required	Do Not Require Add-On Code	
EAN-13 Beginning with 978 Add-On Code Required	Do Not Require Add-On Code	
EAN-13 Beginning with 979 Add-On Code Required	Do Not Require Add-On Code	
<b>UPC-E</b>		
UPC-E0	Enabled	

UPC-EI	Disabled	
Check Character	Transmit	
2-Digit Add-On Code	Disabled	
5-Digit Add-On Code	Disabled	
Add-On Code	Not required	
Add-On Code Separator	Off	
Transmit Preamble Character	System Character	
Convert UPC-E to UPC-A	Disabled	
<b>UPC-A</b>		
UPC-A	Enabled	
Check Character	Transmit	
2-Digit Add-On Code	Disabled	
5-Digit Add-On Code	Disabled	
Add-On Code	Not required	
Add-On Code Separator	Off	
Transmit Preamble Character	System Character	
<b>Interleaved 2 of 5</b>		
Interleaved 2 of 5	Enabled	
Check Character Verification	Disabled	
Maximum Length	80	
Minimum Length	6	
<b>ITF-14</b>		
ITF-14	Disabled	
<b>ITF-6</b>		
ITF-6	Disabled	
<b>Matrix 2 of 5</b>		
Matrix 2 of 5	Enabled	
Check Character Verification	Disabled	
Maximum Length	80	
Minimum Length	4	
<b>Code 39</b>		
Code 39	Enabled	
Check Character Verification	Disabled	
Start/Stop Character	Do not transmit	
Code 39 Full ASCII	Disabled	
Maximum Length	48	
Minimum Length	1	
<b>Codabar</b>		

Codabar	Enabled	
Check Character Verification	Disabled	
Start/Stop Character	Do not transmit ABCD/ABCD as Start/Stop Character	
Maximum Length	60	
Minimum Length	2	
<b>Code 93</b>		
Code 93	Disabled	
Check Character	Do not transmit	
Check Character Verification	Enabled	
Maximum Length	48	
Minimum Length	1	
<b>GS1-128 (UCC/EAN-128)</b>		
GS1-128	Enabled	
Maximum Length	48	
Minimum Length	1	
<b>AIM 128</b>		
AIM 128	Disabled	
Maximum Length	48	
Minimum Length	1	
Check Character	Do not transmit	
<b>ISBT 128</b>		
ISBT 128	Disabled	
<b>Code 11</b>		
Code 11	Disabled	
Check Character	Transmit	
Check Character Verification	One Check Character, MOD11	
Maximum Length	48	
Minimum Length	4	
<b>ISBN</b>		
ISBN	Disabled	
ISBN Format	ISBN-10	
<b>ISSN</b>		
ISSN	Disabled	
<b>Industrial 25</b>		
Industrial 25	Disabled	
Check Character Verification	Disabled	
Maximum Length	48	

Minimum Length	6	
<b>Standard 25</b>		
Standard 25	Disabled	
Check Character Verification	Disabled	
Maximum Length	48	
Minimum Length	6	
<b>COOP 25</b>		
COOP 25	Enabled	
Check Character Verification	Disabled	
Maximum Length	48	
Minimum Length	1	
<b>Deutsche 14</b>		
Deutsche 14	Disabled	
<b>Deutsche 12</b>		
Deutsche 12	Disabled	
<b>Plessey</b>		
Plessey	Disabled	
Check Character Verification	Disabled	
Maximum Length	48	
Minimum Length	4	
<b>MSI-Plessey</b>		
MSI-Plessey	Disabled	
Check Character	Transmit	
Check Character Verification	One Check Character, MOD10	
Maximum Length	48	
Minimum Length	4	
<b>PDF417</b>		
PDF417	Enabled	
PDF417 Inverse	Decode Both	
Character Encoding	Default Character Encoding	
Maximum Length	2710	
Minimum Length	1	
<b>QR Code</b>		
QR Code	Enabled	
Read Single QR Only	Enabled	
QR Inverse	Read regular & inverse barcodes	
Character Encoding	Default Character Encoding	
QR ECI Output	Enabled	

Maximum Length	7089	
Minimum Length	1	
QR Decoding Complexity	Medium	
Continuous Code	Enabled	
Dot-peen Code	Enabled	
Mirror Code	Enabled	
QR Model 1	Enabled	
QR Model 2	Enabled	
<b>Data Matrix</b>		
Data Matrix	Enabled	
Rectangular Barcode	Enabled	
Data Matrix Inverse	Read regular & inverse barcodes	
Character Encoding	Default Character Encoding	
Data Matrix ECI Output	Enabled	
Maximum Length	3116	
Minimum Length	1	
Data Matrix Decoding Complexity	medium	
ECC200	Enabled	
ECCTO140	Enabled	
Continuous Mode	Enabled	
Dot-peen Code	Enabled	
Mirror Code	Enabled	
<b>Data Formatter</b>		
Data Formatter	Disabled	
Non-Match Error Beep	On	
Data Format Selection	Format_0	
<b>Prefix &amp; Suffix</b>		
Prefix Sequence	Code ID+ Custom +AIM ID	
Custom Prefix	Disabled	
AIM ID Prefix	Disabled	
Code ID Prefix	Disabled	
Custom Suffix	Disabled	
Terminating Character Suffix	Enabled	

## AIM ID Table

Symbology	AIM ID	Possible AIM ID Modifiers (m)
Code 128	]C0	
GS1-128 (UCC/EAN-128)	]C1	
EAN-8	]E4	
EAN-8 with Addon	]E3	
EAN-13	]E0	
EAN-13 with Addon	]E3	
UPC-E	]E0	
UPC-E with Addon	]E3	
UPC-A	]E0	
UPC-A with Addon	]E3	
Interleaved 2 of 5	]Im	0, 1, 3
ITF-14	]Im	1, 3
ITF-6	]Im	1, 3
Matrix 2 of 5	]X0	
Code 39	]Am	0, 1, 3, 4, 5, 7
Codabar	]Fm	0, 2, 4
Code 93	]G0	
ISSN	]X0	
ISBN	]X0	
Industrial 25	]S0	
Standard 25	]R0	
COOP 25	]X0	
Deutsche 12	]X0	
Deutsche 14	]X0	
AIM 128	]C2	
Plessey	]P0	
Code 11	]Hm	0, 1, 3
MSI Plessey	]Mm	0, 1
PDF417	]Lm	0-2
QR Code	]Qm	0-6
Data Matrix	]dm	0-6
Micro QR	]Q1	

**Note:** “m” represents the AIM modifier character. Refer to ISO/IEC 15424:2008 Information technology – Automatic identification and data capture techniques – Data Carrier Identifiers (including Symbology Identifiers) for AIM modifier character details.

---

## Code ID Table

Symbology	Code ID
Code128	j
GSI-128 (UCC/EAN-128)	j
EAN-8	d
EAN-13	d
UPC-E	c
UPC-A	c
Interleaved 2 of 5	e
ITF-14	e
ITF-6	e
Matrix 2 of 5	v
Code 39	b
Codabar	a
Code 93	i
AIM 128	X
COOP 25	X
Deutsche 12	X
Deutsche 14	X
ISSN	g
ISBN	B
Industrial 2/5	l
Standard 2/5	f
Plessey	n
Code 11	H
MSI Plessey	m
PDF417	r
QR Code	s
Data Matrix	u
Micro QR	X

---

## Symbology ID Number

Symbology	ID Number
Code 128	002
GSI-128 (UCC/EAN-128)	003
EAN-8	004
EAN-13	005
UPC-E	006
UPC-A	007
Interleaved 2 OF 5	008
ITF-14	009
ITF-6	010
Matrix 2 of 5	011
Code 39	013
Codabar	015
Code 93	017
AIM 128	020
COOP 25	022
ISSN	023
ISBN	024
Industrial25	025
Standard25	026
Plessey	027
Code11	028
MSI-Plessey	029
PDF417	032
QR Code	033
Data Matrix	035
Deutsche 14	128
Deutsche 12	129
Micro QR	134



## ASCII Table

Hex	Dec	Char
00	0	NUL (Null char.)
01	1	SOH (Start of Header)
02	2	STX (Start of Text)
03	3	ETX (End of Text)
04	4	EOT (End of Transmission)
05	5	ENQ (Enquiry)
06	6	ACK (Acknowledgment)
07	7	BEL (Bell)
08	8	BS (Backspace)
09	9	HT (Horizontal Tab)
0a	10	LF (Line Feed)
0b	11	VT (Vertical Tab)
0c	12	FF (Form Feed)
0d	13	CR (Carriage Return)
0e	14	SO (Shift Out)
0f	15	SI (Shift In)
10	16	DLE (Data Link Escape)
11	17	DC1 (XON) (Device Control 1)
12	18	DC2 (Device Control 2)
13	19	DC3 (XOFF) (Device Control 3)
14	20	DC4 (Device Control 4)
15	21	NAK (Negative Acknowledgment)
16	22	SYN (Synchronous Idle)
17	23	ETB (End of Trans. Block)
18	24	CAN (Cancel)
19	25	EM (End of Medium)
1a	26	SUB (Substitute)
1b	27	ESC (Escape)
1c	28	FS (File Separator)
1d	29	GS (Group Separator)


Hex	Dec	Char
1e	30	RS (Request to Send)
1f	31	US (Unit Separator)
20	32	SP (Space)
21	33	! (Exclamation Mark)
22	34	" (Double Quote)
23	35	# (Number Sign)
24	36	\$ (Dollar Sign)
25	37	% (Percent)
26	38	& (Ampersand)
27	39	` (Single Quote)
28	40	( (Left/ Opening Parenthesis)
29	41	) (Right/ Closing Parenthesis)
2a	42	* (Asterisk)
2b	43	+ (Plus)
2c	44	, (Comma)
2d	45	- (Minus/ Dash)
2e	46	. (Dot)
2f	47	/ (Forward Slash)
30	48	0
31	49	1
32	50	2
33	51	3
34	52	4
35	53	5
36	54	6
37	55	7
38	56	8
39	57	9
3a	58	: (Colon)
3b	59	; (Semi-colon)
3c	60	< (Less Than)
3d	61	= (Equal Sign)

Hex	Dec	Char
3e	62	> (Greater Than)
3f	63	? (Question Mark)
40	64	@ (AT Symbol)
41	65	A
42	66	B
43	67	C
44	68	D
45	69	E
46	70	F
47	71	G
48	72	H
49	73	I
4a	74	J
4b	75	K
4c	76	L
4d	77	M
4e	78	N
4f	79	O
50	80	P
51	81	Q
52	82	R
53	83	S
54	84	T
55	85	U
56	86	V
57	87	W
58	88	X
59	89	Y
5a	90	Z
5b	91	[ (Left/ Opening Bracket)
5c	92	\ (Back Slash)
5d	93	] (Right/ Closing Bracket)

Hex	Dec	Char
5e	94	^ (Caret/ Circumflex)
5f	95	_ (Underscore)
60	96	' (Grave Accent)
61	97	a
62	98	b
63	99	c
64	100	d
65	101	e
66	102	f
67	103	g
68	104	h
69	105	i
6a	106	j
6b	107	k
6c	108	l
6d	109	m
6e	110	n
6f	111	o
70	112	p
71	113	q
72	114	r
73	115	s
74	116	t
75	117	u
76	118	v
77	119	w
78	120	x
79	121	y
7a	122	z
7b	123	{ (Left/ Opening Brace)
7c	124	(Vertical Bar)
7d	125	} (Right/ Closing Brace)
7e	126	~ (Tilde)
7f	127	DEL (Delete)

## Newland AIDC

 No.1 Rujiang West Rd., Mawei, Fuzhou, Fujian 350015, China

 +86-591-83979500

 [info@newlandaidc.com](mailto:info@newlandaidc.com) 

[www.newlandaidc.com](http://www.newlandaidc.com)

## Asia Pacific

Add: 6 Raffles Quay #14-06 Singapore 048582

Email: [info@newlandaidc.com](mailto:info@newlandaidc.com)

### Taiwan:

Add: 7F-6, No. 268, Liancheng Rd.,  
Jhonghe Dist. 235, New Taipei City,

Taiwan

Tel: +886 2 7731 5388

Email: [info@newlandaidc.com](mailto:info@newlandaidc.com)

### Japan:

住所: 〒108-0075

東京都港区港南1丁目9-3 6

アレア品川ビル13階407

電話: +84 03 4405 3222

メール: [info@newlandaidc.com](mailto:info@newlandaidc.com)

### Korea:

Add: Biz. Center Best-one, Jang-eun Medical  
Plaza 6F, Bojeong-dong 1261-4, Kihung-gu,

Yongin-City, Kyunggi-do, South Korea

Tel: +82 10 8990 4838

Email: [info@newlandaidc.com](mailto:info@newlandaidc.com)

### Indonesia:

Add: Eightyeight@kasablanka Tower A 12th  
Floor Unit A&H, Jl. Casablanca Raya Kav. 88,  
Jakarta Selatan 12870

Tel: +62 8161157247

Email: [info@newlandaidc.com](mailto:info@newlandaidc.com)

### Vietnam:

Tel: +84 909 345 375

Email: [info@newlandaidc.com](mailto:info@newlandaidc.com)

### India:

Add: 416 & 417, Tower C, NOIDA ONE  
business park, B-8, Sector 62, Noida,  
Uttar Pradesh - 201301

Tel: +91 120 3508102

Email: [info@newlandaidc.com](mailto:info@newlandaidc.com)

## Europe & Middle East & Africa

Add: Rolweg 25, 4104 AV Culemborg, The Netherlands

Tel: +31 (0) 345 87 00 33

Web: [www.newland-id.com](http://www.newland-id.com)

Email: [sales@newland-id.com](mailto:sales@newland-id.com)

Tech Support: [tech-support@newland-id.com](mailto:tech-support@newland-id.com)

## North America

Add: 46559 Fremont Blvd., Fremont, CA 94538, USA

Tel: +1 510 490 3888

Email: [info@newlandaidc.com](mailto:info@newlandaidc.com)

North America Channel:

Tel: +1 408 838 3703

Email: [info@newlandaidc.com](mailto:info@newlandaidc.com)

## Latin America

Tel: +1 239 598 0068

Email: [info@newlandaidc.com](mailto:info@newlandaidc.com)

### Brazil:

Tel: +55 35 9767 6078

### Colombia:

Tel: +57 319 387 4484

### Chile:

Tel: +56 9 9337 3177

Mexico, Central America & Caribbean:

Tel: +52 155 5432 9079



**Newland AIDC**  
Scanning Made Simple

