

# Honeywell Device Types

## For use with SAP Systems

Honeywell printers are now self certified through the SAP® Printer Vendor Program. Integrated barcode labeling with SAP System is optimized with Honeywell device types for use with SAP Smart Forms and SAP Business Suite.

Honeywell also continues to support printing barcode labels from SAPScript in SAP R/3 environment, XML-enabled printing in SAP Auto-ID Infrastructure and third-party label design and print management solutions.

## Using this Document

This document is intended to assist system integrators and administrators when installing and configuring Honeywell device types in a typical SAP environment. It is not an exhaustive guide for printing labels via SAP System. Knowledge of SAP platform and appropriate system- level permissions are assumed.

The following documents may be helpful when using Honeywell device types for use with SAP System:

- SAP Printing Guide ([BC-CCM-PRN](#))
- SAP Note #2907708

## Supported Command Languages

Supports only Direct Protocol printer command language.

## Supported Host Systems

Supports printing from Smart Forms and SAP Business Suite. The new Device Type Printer Wizard described in this document is available on Unicode-systems with the following SAP NetWeaver Basis releases:

- 702 SP14 and higher
- 730 SP10 and higher
- 731 SP09 and higher
- 740 SP03 and higher

## Download

The Honeywell device types compatible with SAP System may be downloaded from <https://hsmftp.honeywell.com/>.

**Software > Printers > Printer Software and Drivers > Printer Drivers > SAP Device Type > Current.**

The following files are included in the device type package:

- ABAP Page Description Language (PDL) Driver.
- PRI files - Device Types.  
There is one \*.PRI file for each printer type as follows:

Honeywell Printer Type	Supported Printer
6 inch (203 dpi) DP	PX6i, PX6ie, PX65
6 inch (300 dpi) DP	PM65, PX6i, PX6ie, PX65
6 inch (406 dpi) DP	PX6i
4 inch (203 dpi) DP	RP4f, PX45, PX4i, PM4i, PM43, PM43c, PF4i, PD41, PD42, PD43, PD43c, PC43d, PC43t, PB50, PC42t, PC42d, PM42, PM45, PM45c, PX940, PX4ie, PX240S, PX240, PC42E-T, PC300T, PC310T, OT810, OT820
4 inch (300 dpi) DP	PX45, PX4i, PM4i, PM43, PM43c, PD41, PD42, PD43, PD45S, PD45, PD43c, PC43t, PC43d, PC45d, PC45t, PM42, PM45, PM45c, PX940, PX4ie, PX240S, PX240, PC42E-T, PC300T, PC310T, OT810, OT820
4 inch (406 dpi) DP	PX45, PX4i, PM4i, PM43, PM43c, PM42, PX4ie, PM45, PM45c

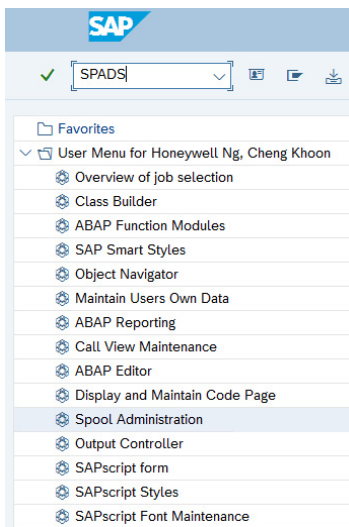
Honeywell Printer Type	Supported Printer
4 inch (600 dpi) DP	PX940, PM45, PM45c
3 inch (203 dpi) DP	PB32
2 inch (203 dpi) DP	RP2f, PF2i, PC23d, PB22, PM23c
2 inch (300 dpi) DP	PC23d, PM23c
2 inch (406 dpi) DP	PM23c

Save the Honeywell device type package to a location on your server and extract the files.

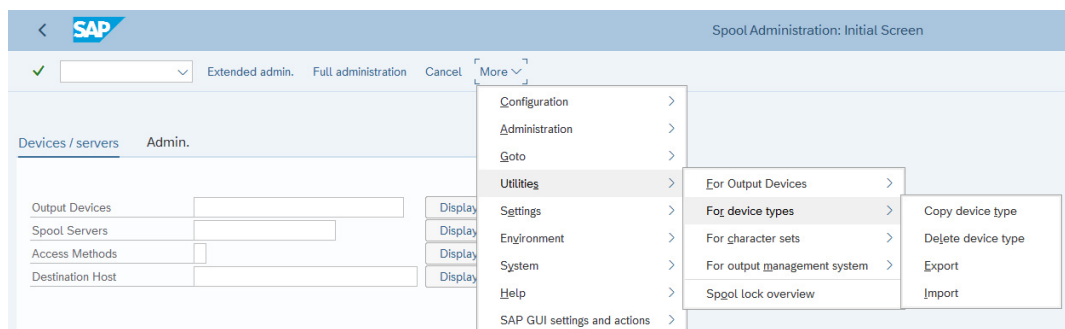
## Import

Before Honeywell printers can be recognized by the SAP System, the printer device types and driver must be installed. Install the device types as follows.

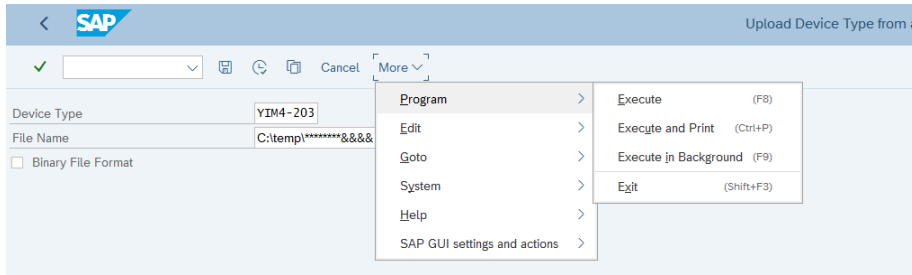
1. Logon to the SAP System.
2. Open Spool Administration (browse or type "SPAD" in the transaction code area).



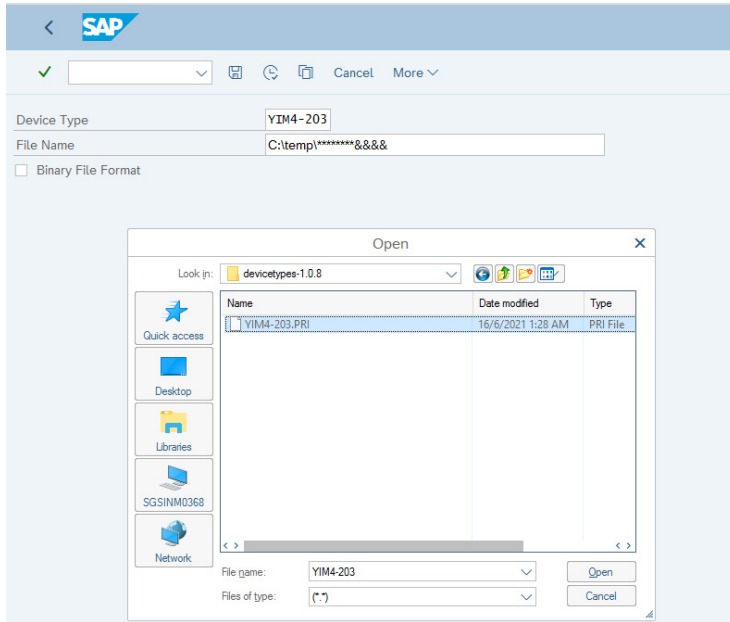
3. Select **More > Utilities > For device types > Import**.



4. Insert the Device type, for example, YIM4-203 for 4-inch 203 DPI; Select **More > Program > Execute**.



5. Map the location of the .PRI file, select the correct .PRI, then click **Open** or double-click the file.

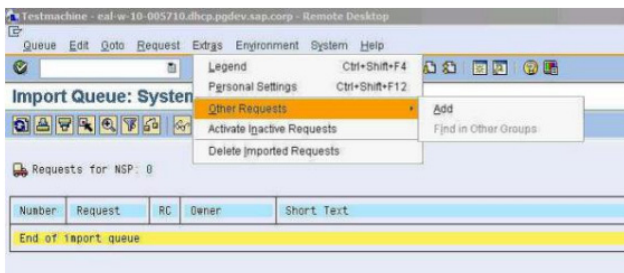


6. **Object successfully imported** is displayed once the import is successful.

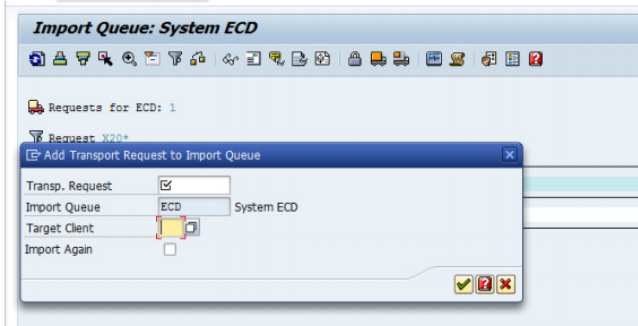
## Installing Transport Package

Install the ABAP PDL drivers for Honeywell printers using the following steps:

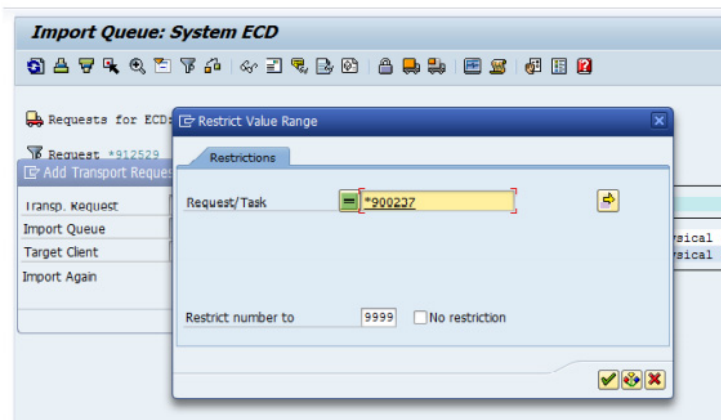
1. Copy the transport files to the proper locations in your SAP System:
  - Copy the K\*.PVD to the Cofile folder located at D:\usr\sap\trans\cofile
  - Copy the R\*.PVD to the Data folder located at D:\usr\sap\trans\data
2. Logon to the SAP ECC Dev System.
3. Open transaction STMS  
(Browse or type "STMS" in the 8. Verify Transport Request and click the Check box transaction code area).
4. Select **Extras > Other Requests > Add**.



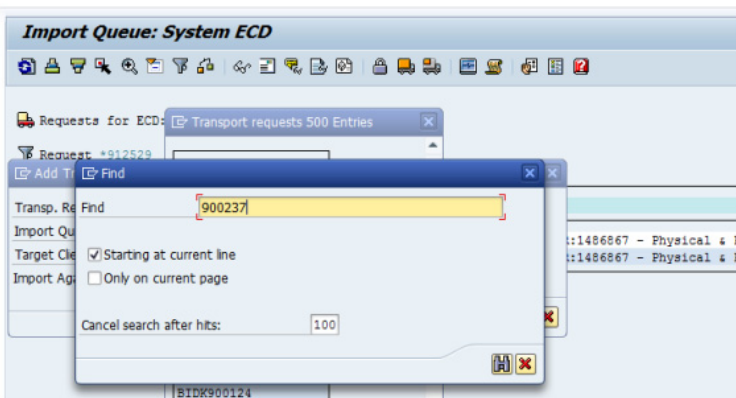
5. Enter the target client and click the Check box.



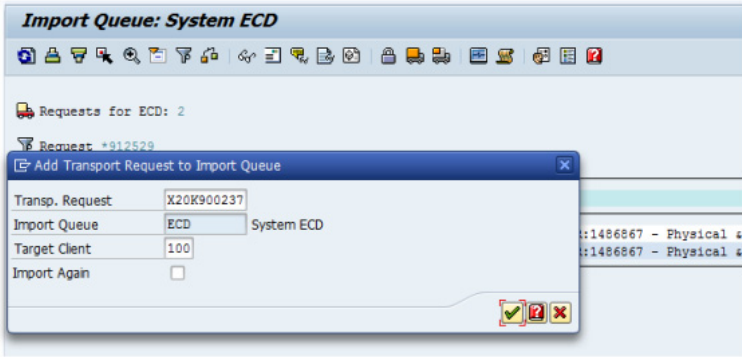
6. Search for the desired transport using the \*wildcard selection and the transport file name (do not include the .PVD extension) and click the Check box.



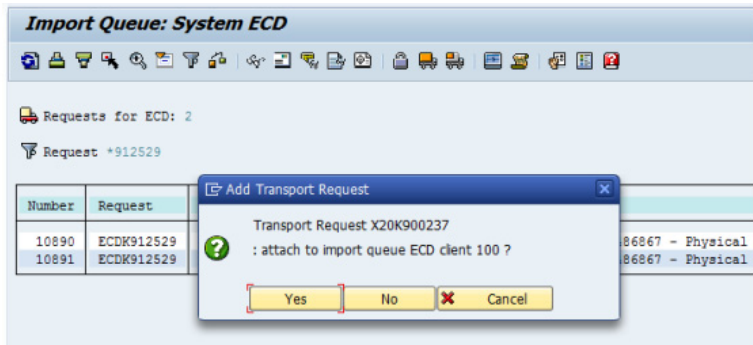
7. Identify and select the desired Transport Number.



- Verify Transport Request and click the Check box.



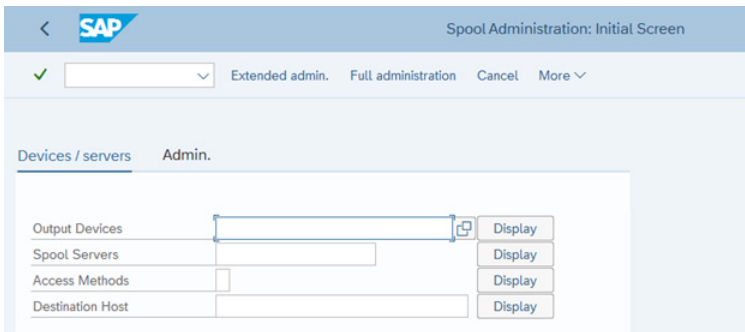
- Click Yes to attach the Transport to the import queue.



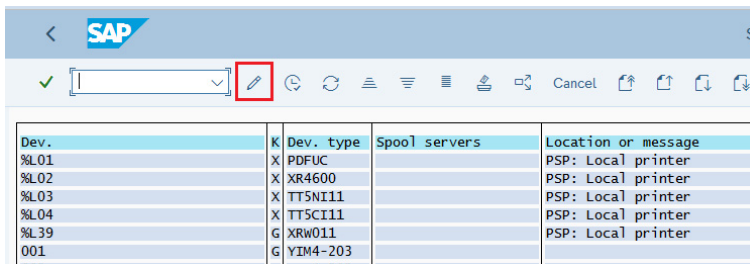
### Configuring Honeywell Output Device

This section describes how to create and configure a Honeywell device using the Device Type Printer Wizard. Import of Honeywell device types and driver should be completed prior to this step as described in previous sections of this document.

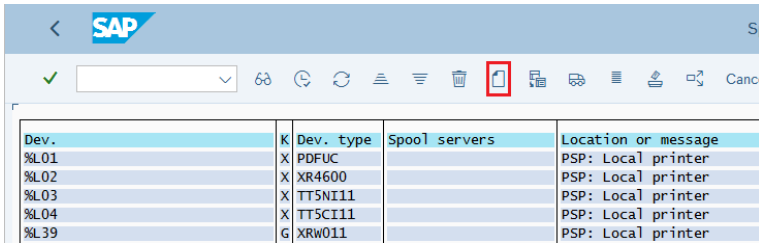
- Open Spool Administration (browse or type "SPAD" in the transaction code area).
- Click Display next to Output Devices.



- Click the Change icon.

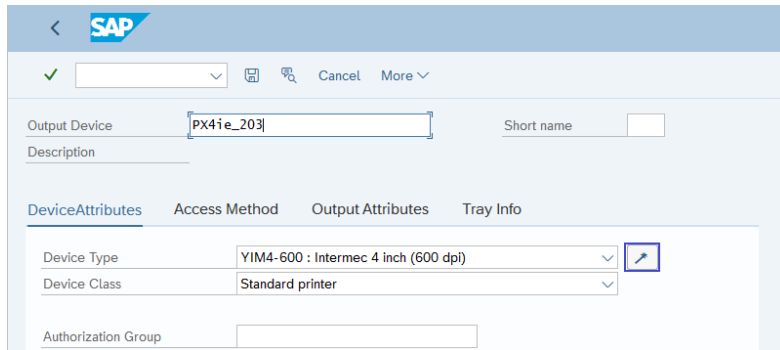


- Click the Create icon.



Dev.	K	Dev. type	Spool servers	Location or message
%L01	X	PDFUC		PSP: Local printer
%L02	X	XR4600		PSP: Local printer
%L03	X	TT5NI11		PSP: Local printer
%L04	X	TT5CI11		PSP: Local printer
%L39	G	XRW011		PSP: Local printer


- Enter the Output Device name, the Short name and click on the Wizard icon.



Output Device:  Short name:

Description:

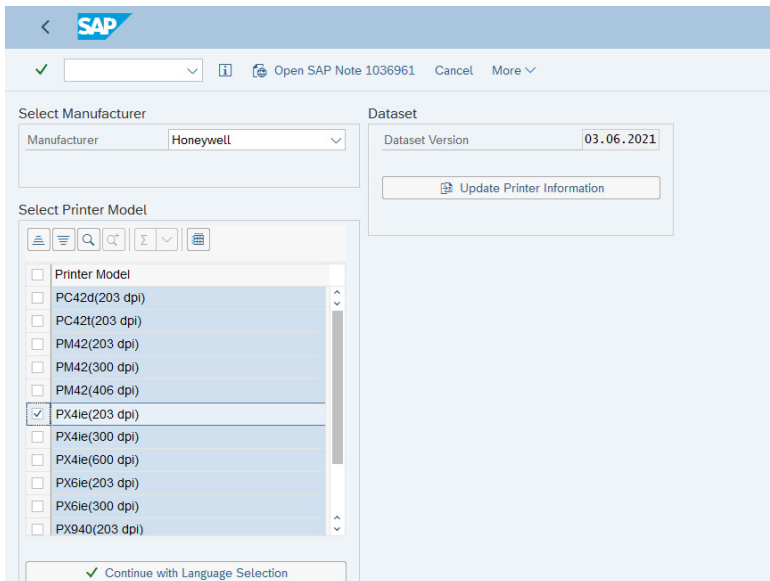
DeviceAttributes | Access Method | Output Attributes | Tray Info

Device Type:  

Device Class:

Authorization Group:

- From the Device Type Selection Window select "Honeywell" from the Manufacturer's Name drop-down box to see the list of available Honeywell printers. Right-click a printer to select it and click the Check box. Then select **Continue with Language Selection**.



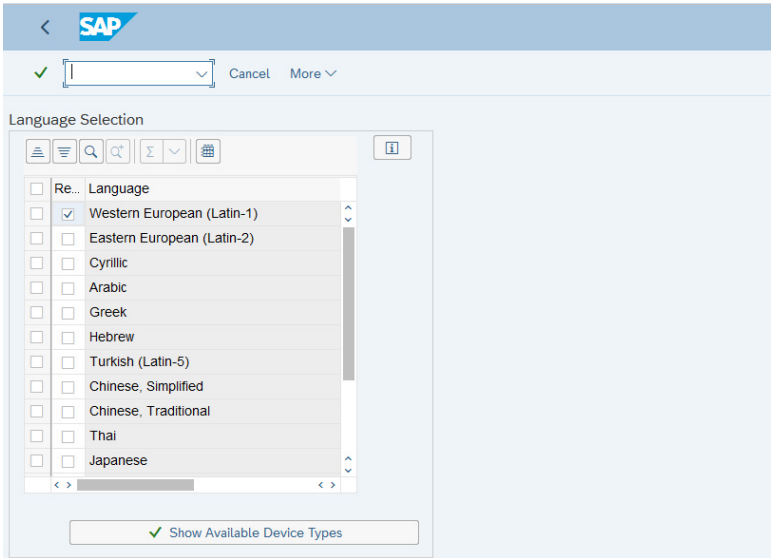
Select Manufacturer:

Dataset:

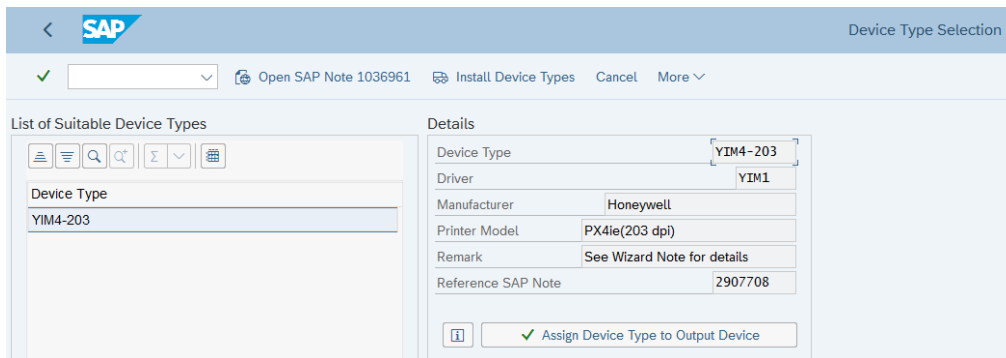
Select Printer Model:

- Printer Model
- PC42d(203 dpi)
- PC42t(203 dpi)
- PM42(203 dpi)
- PM42(300 dpi)
- PM42(406 dpi)
- PX4ie(203 dpi)
- PX4ie(300 dpi)
- PX4ie(600 dpi)
- PX6ie(203 dpi)
- PX6ie(300 dpi)
- PX940(203 dpi)

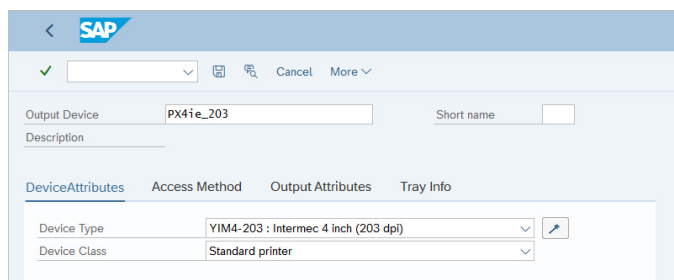
- Select the languages/language groups/scripts which you want to print, then click on **Show Available Device Types** to continue.



- Click **Assign Device Type to Output Device** to assign this device type to the output device. After that the wizard is closed and transaction SPAD is reopened.

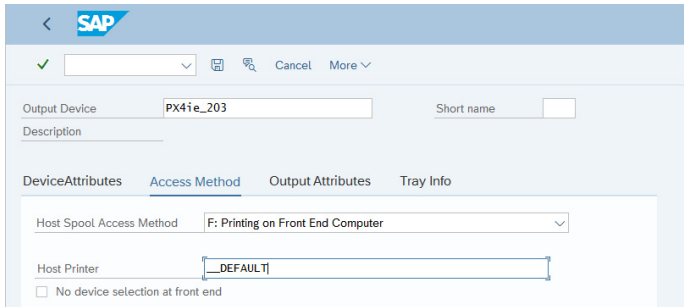


- Enter the Printer Model and Location as necessary and click on the **Access Method** tab.

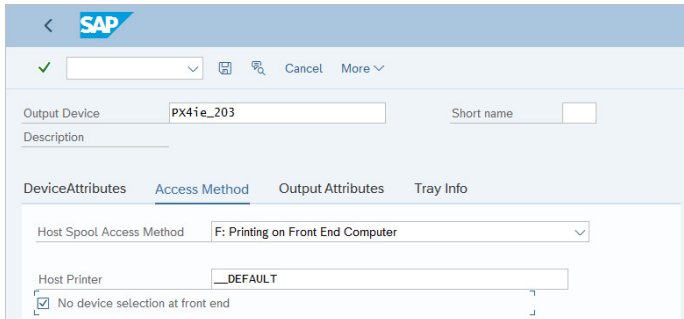


- Select the Host Spool Access Method. The available methods for Honeywell Device Types are:  
 F: Printing on Front End Computer, or  
 G: Front End Printing with Control Tech.

11. Enter " DEFAULT" in the Host Printer field to route the print jobs from the local machine to the default installed printer.



12. Check Device Selection at Frontend, this will route jobs to the default printer. Click the Save icon.



## Standard Features

This section outlines the standard features that are found during implementation of Honeywell device types in the SAP System.

### Barcode

Barcode Name	Description	Options
INT2OF5	Interleaved 2 of 5	Linear height, rotation, ratio, check digit, no human readable
CODE39	Code 39	Linear height, rotation, ratio, check digit, no human readable
CODE39A	Code 39 (full ASCII)	Linear height, rotation, ratio, full ascii character set, human readable
CODE93	Code 93	Linear height, rotation, check digit, human readable
CODE128	Code 128	Linear height, rotation, ratio, full ascii character set, subset a, b and c, human readable
EAN8	EAN-8	Rotation, check digit, human readable
EAN13	EAN-13	Rotation, check digit, no human readable
POSNET	USPS POSNET 5 and USPS POSNET 9	Rotation, check digit, no human readable
PDF417		Rotation, check digit, no human readable
QR Code	QR Code	Rotation. Support two mode: FNC1 in first position, FNC1 in second position.



## Supported Graphics

Monochrome bitmap images are supported on RP, PM, PD, PC, PX Series printers.

## Supported Shapes

- Box
- Horizontal and vertical lines

## Supported Fonts

- Downloading of TrueType fonts from SAP System
- Italics
- UTF-8 code page

The following Font families are supported with printer resident fonts:

Font Family		
COURIER	TIMES	COUR_17
HELVE	LNPRINT	HELVECYR
LETGOTH	MICR_C	HELVE_17
ORCA	MICR_E	TIMECYR
ORCB	COURCYR	TIME_17

The following Font Families are supported through downloadable fonts:

Font Family			
A_SIMP	CNSONGP	KPBATANP	THDRAFT
A_TRAD	DBGOTHIC	KPDODUM	THVIJIT
A_TRAN	DBMINCHO	KPGULIM	TWDPHEI
CNHEI	JPMINCHO	KPGUNGSE	TWMINGP
CNKAI	JPMINCHP	KPSAMMUL	TWMINGP
CNSONG	KPBATANG	THANGSAN	TWSONG

## RFID

- ISO 18000-6C/EPC Gen2
- Write support for RFID inlays
- Protection for RFID inlays
- Writing KILL PASSCODE into memory for RFID inlays
- Writing into EPC memory bank starts at position 4
- Writing into USR memory bank starts at position 0.

## Limitations/Considerations

### Printer Configuration and Status

Printer command languages IPL, DPL, ESIM, ZSIM, CSIM, XSIM or ESC/P are not supported.

- Printer settings, including media settings, are not configurable via the SAP system.
- SAP print options are not supported.
- SNMP status feedback is not provided

## Fonts

The following font options are not supported or have limitations where noted:

- Cascading fonts
- Bitmap fonts
- Underline
- Superscript/Subscript
- Code pages other than UTF-8
- PB22, PB32 and PB50 printers do not support printing Cyrillic characters.
- Asian language fonts may have wider or narrower spacing when compared to the mapped SAP standard system fonts.

## Printer Hardware

- Cutter Control is not configurable via the SAP system.
- Pre-defined finishing modes, such as cut and peel off, are not configurable via the SAP system.

## Graphics

- Print jobs with graphics will not be printed on the following printers:
  - PF2i and PF4i configurations
  - PM4i configurations
  - PX4i and PX6i configurations
  - PD41 and PD42 configurations PB22, PB32 and PB50 configurations.
- Color graphics are not supported.
- Automatic image scaling across different DPI printers is not supported.

## References

Other suggested reading:

- SAP Device Types Release Notes - in the Honeywell Device Types download packet.
- Whitepaper: Bar Code & RFID Label Printing: Options for Printing from SAP.
- SAP Printing Guide ([BC-CCM-PRN](#)).

## Conclusion

Honeywell device types and drivers compatible with SAP System make Honeywell printers even easier to integrate with SAP Smart Forms and SAP Business Suite. This document is intended to assist system integrators and administrators when installing and configuring Honeywell device types in a typical SAP environment.

## Patents

For patent information, see [www.hsmpats.com](http://www.hsmpats.com).

## Trademarks

Adobe, SAP and Oracle are trademarks or registered trademarks of their respective owners.

## Disclaimer

Honeywell International Inc. ("HII") reserves the right to make changes in specifications and other information contained in this document without prior notice, and the reader should in all cases consult HII to determine whether any such changes have been made. HII makes no representation or warranties regarding the information provided in this publication.

HII shall not be liable for technical or editorial errors or omissions contained herein; nor for incidental or consequential damages resulting from the furnishing, performance, or use of this material. HII disclaims all responsibility for the selection and use of software and/or hardware to achieve intended results.

This document contains proprietary information that is protected by copyright. All rights are reserved. No part of this document may be photocopied, reproduced, or translated into another language without the prior written consent of HII.

Copyright ©2023 Honeywell Group of Companies. All rights reserved.

## Honeywell Productivity Solutions and Services

855 S. Mint Street  
Charlotte, NC 28202